

# Career Education

*Ensuring Strong Outcomes for Our Students and Our Region*

Los Rios Community College District  
Board of Trustees

Wednesday, June 9, 2021



LOS RIOS  
COMMUNITY  
COLLEGE DISTRICT

---

# Los Rios Sectors

- Advanced Manufacturing
- Advanced Transportation and Logistics
- Agriculture, Water, and Environmental Technologies
- Business and Global Trade
- Education and Human Services
- Energy, Construction, and Utilities
- Health and Life Sciences
- ICT and Digital Media
- Public Safety and Services
- Retail, Hospitality, and Tourism



---

# Pandemic-Related Strategies to Continue Education

- Impossible-to-convert courses were not offered during the pandemic, with a few exceptions (e.g. Nursing, EMS/Paramedic).
  - Specialized equipment is only available in our facilities
  - Some skills require on-ground instruction
- Difficult-to-Convert programs were taught online but the environment was often suboptimal for meeting student learning outcomes
- Examples: Allied Health, Automotive Technology, Construction, Dental Hygiene, Diesel Mechanics, Electrician Trainee, Veterinary Technology and Welding
- Innovation in creating new online course content

---

# Coming Back Strong

- Reopening impossible to convert programs in Summer and Fall 2021
- Updating outdated equipment and tools with Strong Workforce Program funds
- Providing faculty professional development in online education (Foundations training, OEl alignment)
- Conducting a call campaign for previously enrolled students



---

# Ensuring Quality Programs

- All new programs vetted by the Los Rios Program Placement Council (PPC)
  - Employment demand & wages
  - Unnecessary duplication
- Existing programs undergo a review every 2 years
  - Employment projections, wages & student outcomes
- Ongoing updates to curriculum based on employer feedback & research
- SWP funding awarded to programs that meet a labor market need

---

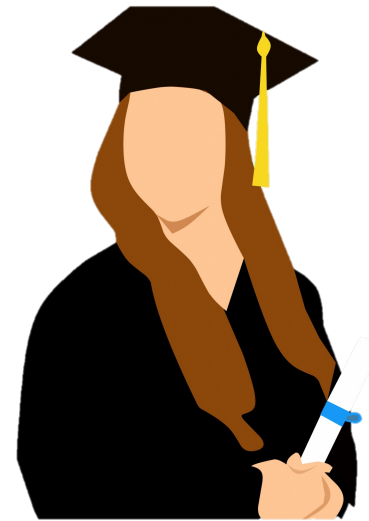
# Career Education: The Path Out of Poverty

**\$30,679**

Living Wage for 1 Adult, No Children

**\$55,622**

Living Wage for 1 Adult, 1 School  
Age Child



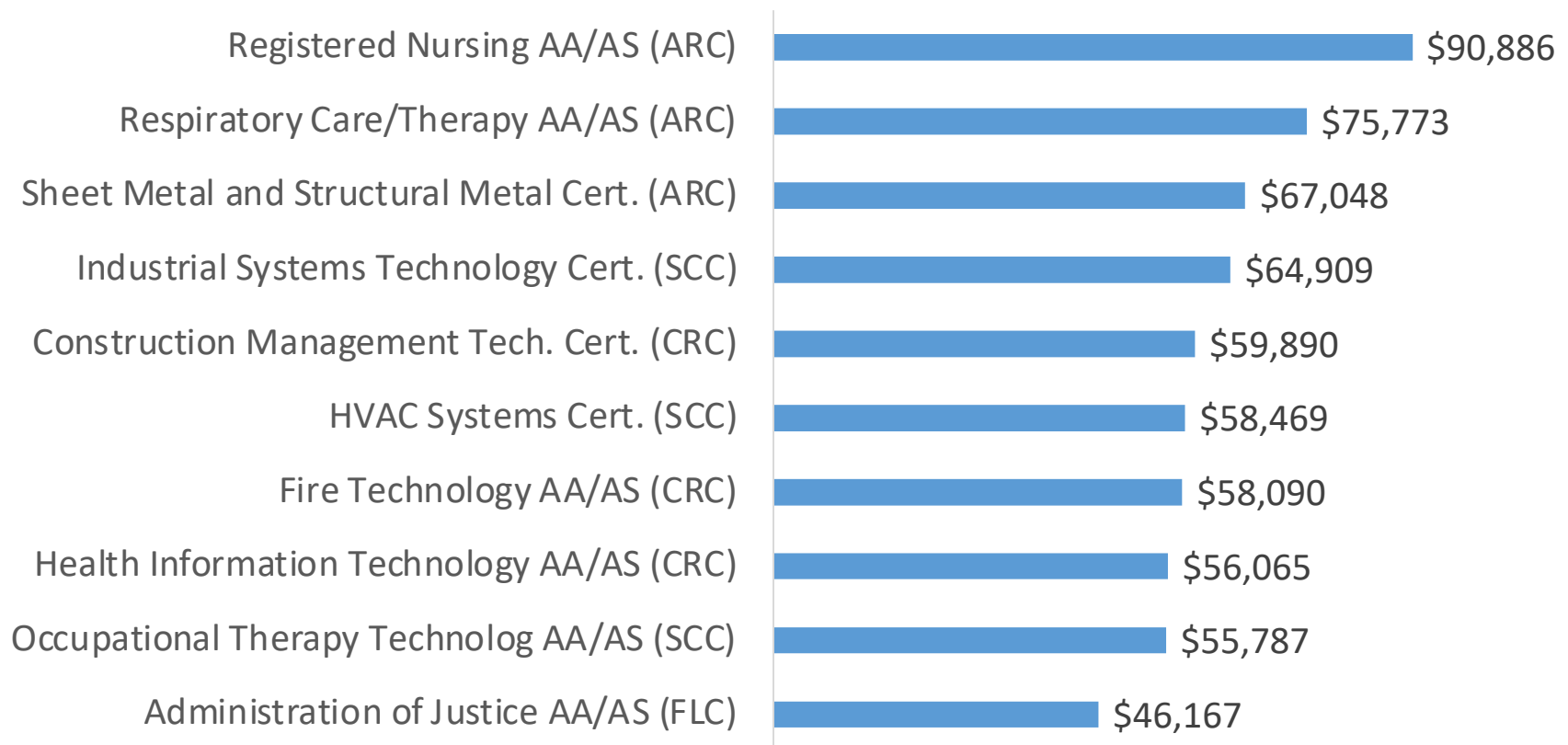
**\$57,219**

AA/AS/Certificates in Career &  
Technical Education (3-years later)

Source: The Self-Sufficiency Standard for California 2021, Center for Women's Welfare, University of Washington, Sacramento County; CCCC Wage Tracker 2004/05 - 2011/12 Median Earnings 3 Years After Award.

# Wages Vary By Program

## Median Wage 3 Years After Award

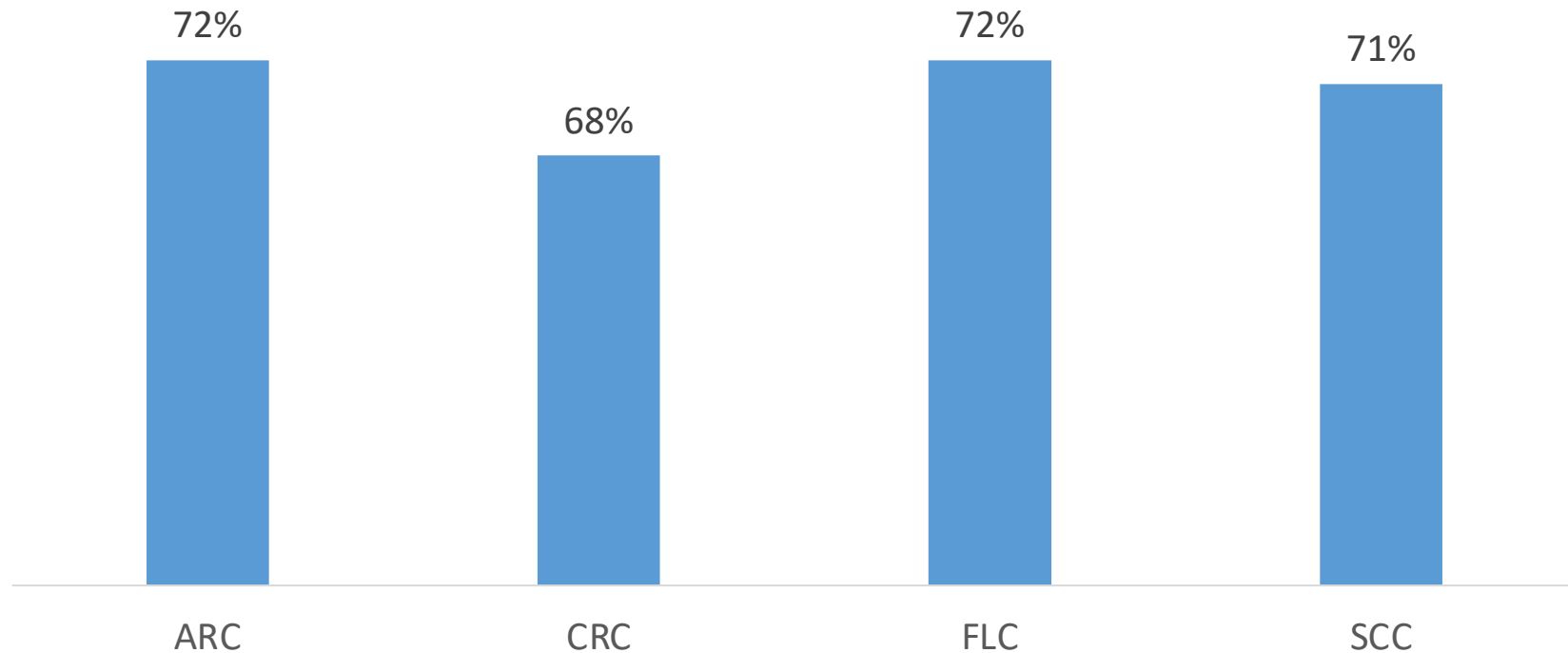


Source: CCCC Wage Tracker 2004/05 - 2011/12 Median Earnings 3 Years After Award

---

# High Rates of Employment in Field of Study

Secured Job Closely Related to Field of Study



Source: CTE Outcome Survey, 2020 ARC, CRC, FLC, & SCC Reports. Includes CTE students who completed a CTE certificate or degree or 9+ CTE units.





---

# Helping Students Make Informed Decisions

- Eureka on-line & campus career centers
- Published academic program maps
- Workshops for high school students
- Educational planning with counselors
- Discipline faculty information
- HCD courses to assist with career planning

# Student Speakers

**Matthew Banks** –Water/Wastewater  
Management @ FLC

**Lindsey Wong** –Medical Assisting @ CRC

**Fabiola Mullaj** –Accounting @ SCC

**Lemuel (Lem) Romby** –Electronics @ ARC

---

# Thank you!

**Torence Powell, Ed.D**

Associate Vice Chancellor of Instruction, District Office

**Theresa Milan**

Interim Associate Vice President of Workforce & Online Engagement, District Office

**Kim Harrell, Ph.D**

Associate Vice President of Instructions for Economic and Workforce Development, CRC

