

# From Resources to Results: Central Partners in Student Success

LIBRARY AND LEARNING RESOURCES AT CRC



**COSUMNES**  
RIVER COLLEGE







# Division Commitment

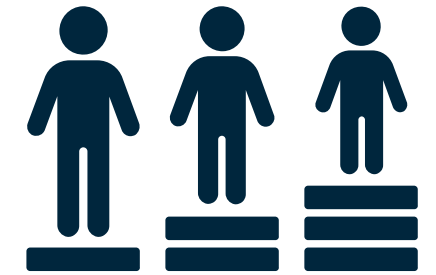
The Library & Learning Resources Division is central to student success, ensuring that every student has access to the tools, skills, and support they need to thrive. Through services, instruction, academic support, and innovation, we advance equity, foster persistence, and prepare students to meet their educational goals.



# Framework

## 1 Vision for Equity and Success Across the Division

A bold vision to deepen equity, expand learning opportunities for Faculty and Staff, and ensure every student has a clear pathway to success.



## 2 Data-Driven Practices

How we use evidence to sharpen our services, measure outcomes, and scale what works



## 3 Innovation Rooted in Need

How we listen to students, identify gaps, and craft creative solutions, from engaging spaces to open educational resources



## 4 Alignment and Collaboration

Beyond the alignment within the division, we weave our efforts into the fabric of the college: partnering with faculty, special programs, and student services so no student falls through the cracks.



# **Vision for Equity and Success Across the Division**



# Investment in Professional Development & Training

- Librarian professional development (Summer Institute & Equity resources)
- Library staff training course
- Student Health & Wellness training
- De-escalation training
- Math Literacy training through a cultural lens
- DSPS training
- Department & division wide retreats





# USC Race & Equity Take-off Grant

The Innovation Grant is a national initiative led by the USC Race and Equity Center, to support community colleges in improving outcomes for men of color.

In 2023, Cosumnes River College (CRC) was selected as one of just 12 colleges nationwide to receive this competitive funding.

CRC launched a special section of PSYC 330 (Introduction to Behavioral Statistics)

Embedded tutor for real-time academic support, offering study jams and out of class tutoring

Success Rates in STAT 300, PSYC 330 (without Take Off),  
and Take Off PSYC 330

Group	STAT 300	PSYC 330	Takeoff
African American	49.2%	53.1%	58.6%
Asian	71.9%	52.4%	100.0%
Filipino	71.0%	60.0%	100.0%
Hispanic/Latino	56.9%	57.8%	84.0%
Multi-Race	59.7%	61.1%	100.0%
Native American	100.0%		
Other Non-White	100.0%		
Pacific Islander	65.0%	50.0%	
Unknown	100.0%	50.0%	
White	72.5%	64.3%	100.0%
Overall	64.3%	57.8%	77.5%



# Targeted Collaboration for Disproportionality Impacted Students



- Institutionalization of Takeoff Grant
- Affinity Group Study Jams
- Passport to Success 21 Day Challenge
- Early Technology Lending for Special Programs



# Data Driven Practices



# Measuring Library Impact

**Ongoing Quantitative measurements (e.g. usage of library services)**

**Gathering student voices and feedback to inform innovations**

- Research appointment feedback surveys
- Student voices on OER/ZTC impact (2024–2025)
- Surveying technology borrowers (fall 2024)
- Surveying library users (fall 2025)

**“CRC Library [...] offers a quiet and focused environment where I can concentrate without distractions.”**

**–CRC Student**

**“Without [the] laptop I wouldn't have been able to continue my education.”**

**– CRC Student (Fall 24)**



# Point-of-need support

Students Impacted by CRC Library Instruction & Support			
	2022-2023	2023-2024	2024-2025
Research support from a librarian	2589	2474	2420
Course-integrated library instruction & library workshops	1136	1446	2090
Asynchronous library instruction	1565	1410	1109
Tech help interactions			2103*

# Tutoring Services Data

	Tutoring Center/ACCT Lab			Math Center		
	In-Person	Online	Unduplicated	In-Person	Online	Unduplicated
Fall 2022	281	227		2960	320	
Spring 2023	486	217		3066	153	
Fall 2023	1958	485	486	7095	160	760
Spring 2024	1841	280	470	5557	174	592
Fall 2024	2505	327	567	5837	81	698
Spring 2025	2774	375	451	5053	170	568
% increase/decrease from Spring 24 & Spring 25	51%	34%	-4%	-9%	-2%	-4%

	RWC			Study Lab		EGC	
	In-Person	Online	Unduplicated	In-Person	Unduplicated	In-Person	Unduplicated
Fall 2022	922	368		781		690	
Spring 2023	879	409		1304		839	
Fall 2023	1057	469	294	1623	414	1284	212
Spring 2024	1016	177	313	807	270	613	171
Fall 2024	2421	348	555	1427	422	790	225
Spring 2025	2230	281	537	1297	354	801	216
% increase/decrease from Spring 24 & Spring 25	119%	59%	72%	61%	31%	31%	26%



# Data Driven Improvements in Tutoring Services:

**"It felt like such a supportive place to get help."**

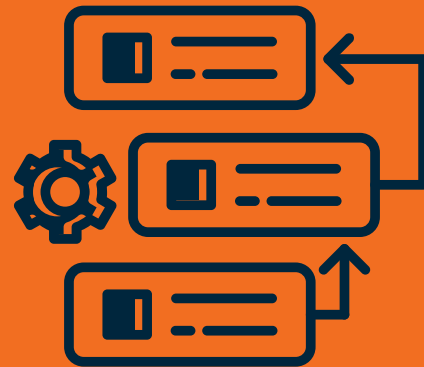
**-CRC Student**

**"The Acct Lab was so helpful in understanding accounting 301 concepts! I learned so much and was able to apply it to the quizzes and exams.."**

**-CRC Student**



Uniform Check-in/out system in each of our centers



Math Center queue system added to track specific classes being supported



Class data collection in the Reading & Writing Center



Ongoing student feedback, online & in-person

# Innovation Rooted in Need



# Integration of Tutoring and Learning Support Services



- Coordinator to build campus relations, oversee the quality of programming, trainings, & promotion of services
- Supervisor that provides a bridge among services within the division & manage all classified staff

## Centers & Programs Include:

Math Center

Reading &  
Writing Center

Tutoring Center

Math  
Supplemental  
Instruction

English  
Supplemental  
Assistant

ESL  
Supplemental  
Assistant



# Flexible Spaces to Meet Student Needs



	2022-2023	2023-2024	2024-2025
Group Study Room Reservations	997	2868	3483





# OER/ZTC Support From the Library



Since 2021, the OER/ZTC initiative at CRC has been coordinated by a librarian. As of fall 2025:

**78%**

**Of course sections** are  
being taught as ZTC

CRC students are saving  
**\$2.7 million each**  
**semester**

(adding up to \$16.6 million since the  
initiative began)

“Having access to free textbooks and learning materials has substantially helped lessen the burden of having to prepare costs for school and has helped me focus more on learning rather than what needs to be paid and stressing about how I will be able to afford to attend college.”

–Jessie  
(taken History and Chemistry ZTC courses)

# Bookstore and Library

The college has a responsibility to provide burden-free access to instructional materials.

The CRC Library has already addressed gaps in textbook information provided to students by:

- launching a Reserves Request Form to gather course materials information directly from faculty
- maintaining records for OER textbooks and library-provided ZTC materials to facilitate student access to these course materials.

As the college discontinues on ground bookstore services and transitions to a new bookstore vendor, CRC Librarians are prepared to serve as a central coordination point to ensure that students have access to accurate and timely information about course materials.



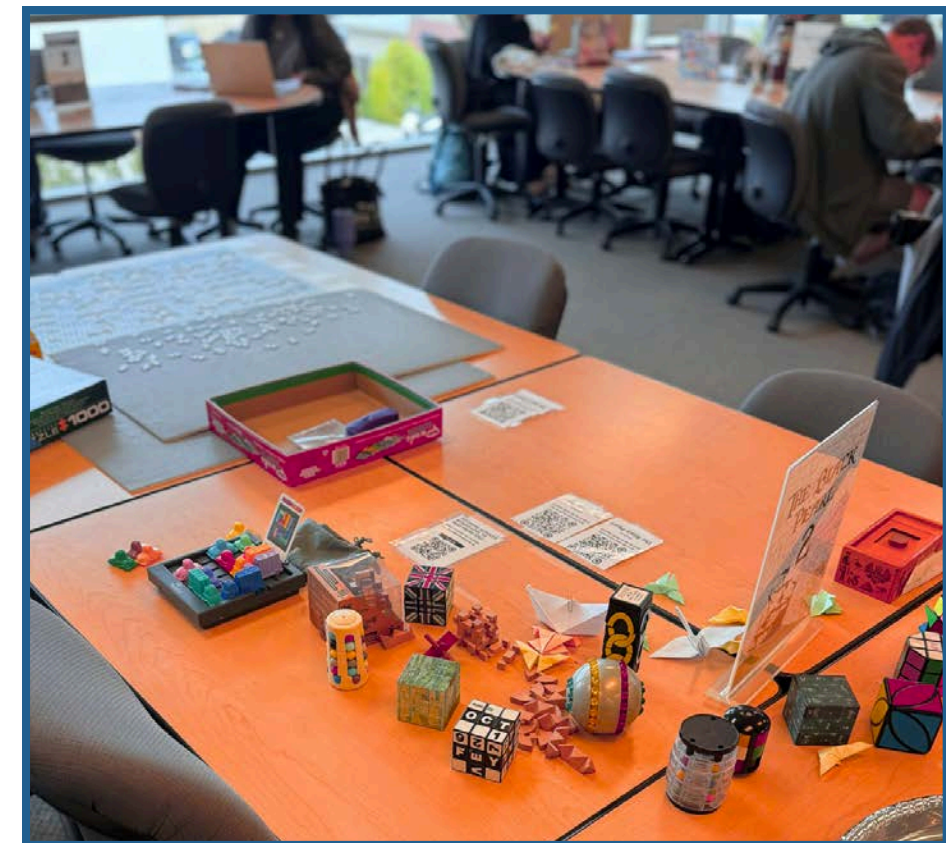


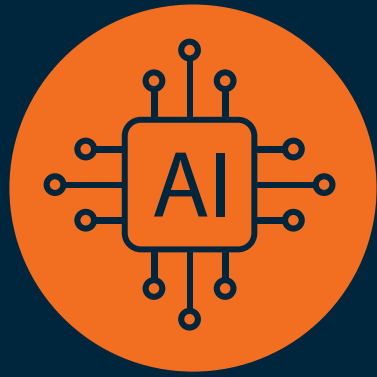
# Alignment and Collaboration

# CAMPUS ENGAGEMENT NORMALIZING TUTORING SERVICES



- Tutoring Services Open House
- Poetry Slams
- Math & Reading & Writing Workshops
- ENG Faculty Lead Events
- Scavenger Hunt of Tutoring Services
- Brain Break Activities
- De-Stress for Success Events:
  - Don't Panic, Grab a Pancake
  - Do-Nut Wait to Study





# CAMPUS ENGAGEMENT BUILDING AI LITERACY

## Building AI Literacy

- Faculty, staff, and tutor professional development.
- Series of student-centered AI literacy workshops offered each semester
- Professional Development Institutes
- Student and faculty surveys on AI
- [AI resource guide](#)





# Conduct as a Supportive Measure

# Restorative Justice Approach for Students



- **Working with Library and Learning Resources to change the behavior, while retaining the students.**
- Rather than punishing the students on the first referrals, connecting students to academic support, Library resources, and how to ethically use AI
- Mental Health as a support for students
  - Skill building sessions
  - Decision-making workshop
  - Connecting students to campus resources
- **AI workshops for dual enrollment students so that we prevent academic misconduct and provide access to students**



# Closing Thoughts

Library & Learning Resources  
are *essential partners* in  
student success at CRC.



**COSUMNES**  
RIVER COLLEGE  
LIBRARY



**COSUMNES**  
RIVER COLLEGE  
TUTORING





# Questions