

# Los Rios Community College District 2025 ANNUAL SUSTAINABILITY REPORT

*Infrastructure Performance · Cost Control · CCCCCO 2030/2035 Alignment*

Presented by: Branden Gistlinck, Director of Sustainability

April 8, 2026

American River

Cosumnes River

Folsom Lake

Sacramento City




---

4 Colleges · 139 Buildings

4.7 Million GSF

# CCCCO 2026 Requirements – 2025 Status

*"You can't manage what you can't measure"*

 Energy (EUI)	 Electrification	 Water
<b>ACTIVE</b>	<b>ACTIVE</b>	<b>ACTIVE</b>
<b>2026</b> EUI benchmark established (kBtu/SF)	<b>2026</b> Natural gas % of district benchmarked	<b>2026</b> Potable water use benchmarked (Gal/SF)
<b>2030</b> 25% reduction from benchmark	<b>2030</b> 30% reduction	<b>2030</b> 25% reduction from benchmark
<b>2035</b> 50% reduction from benchmark	<b>2035</b> 75% reduction	<b>2035</b> 50% reduction from benchmark

# Other CCCC Goals - 2025 Status (Cont.)

Waste diversion · Transportation & electrification · Renewables

## Waste Diversion

### BASELINE NEEDED

2026 CCCC goal: Establish baseline diversion rate

Current diversion rate:  
Not previously tracked at district level

Engaging campus waste haulers and initiating district-wide waste characterization to establish a baseline by 2026.

## Transportation & Fleet Electrification

### IN PROGRESS

2026 CCCC goal: Fleet electrification benchmark

EV charging stations: ~89 ports confirmed across 11 sites

Fleet: 313 total assets · 19 road EVs (10.3%) · 103 electric carts · 7 hybrids

SMUD EV Program: ongoing reporting & incentives

## Renewables & Clean Energy

### ACTIVE

2026 CCCC goal: RE benchmark established

On-site PV (CRC): 309.5 kW total

- Parking Structure: 249.5 kW CEC AC
- Winn Building: 60 kW CEC AC

**\*2025 Generation: ~265,500 kWh/yr**

SMUD SolarShare Program:

28,324,631 kWh/yr = 76.9% of district electric counts toward RE benchmarks.

Climate Action Plan in Development

# STARS reporting and Climate Action Plan

## Final 2026 CCCCCO Milestone

To maintain accountability and showcase progress towards our goals, LRCCD district and campuses will utilize AASHE **Sustainability Tracking, Assessment & Rating System (STARS)** as framework to developing the district's first public **Climate Action Plan**.

- Supports standards across campuses
- CCCCCO 2026 Climate Action Planning and GHG inventory
- Improves awareness of LRCCD long-term Sustainability strategy.

Step 1 · 2026

**Conduct GHG Emissions  
Inventory Baseline**

Step 2 · 2026

**Create District  
Climate Action Plan**

Step 3 · 2027+

**Set Reduction Targets  
from Baseline**

# Executive Summary

2025 Annual Performance Overview · Key findings & priorities

## Key Wins

- District EUI has improved nearly 45% since FY 2006-07, dropping from ~63 to 49.1 kBtu/SF.
- Our energy efficiency trajectory is among the strongest in the region.
- Avoided +\$600k utility costs (meter defect and rate adjustments)

## Key Challenges

- Building-level sub-metering does not exist across most campus facilities, reducing ability to identify greatest opportunities
- Waste diversion data is currently decentralized, must ID ways to track globally

## 2025 Focus

- Benchmarking & Data Integration - consolidating validated utility data into a unified platform and working towards meter-to-building mapping for CCCCO compliance reporting.

## 2026 Priorities

- Complete meter-to-building mapping.
- Finalize EUI and WUI baselines.
- Submit first CCCCO-compliant benchmark report.
- Establish LRCCD First Climate Action Plan

# Energy Performance

*FY 2024-25*

# Energy Performance (EUI) · FY 2024-25

Where we stand vs. state and national averages · Lower is better · All four colleges performing well below California and national averages



## Each of our four colleges - individually:



What does this mean? Every kBtu/SF represents EUI energy per square foot of campus space. At 49.1, Los Rios uses 46% less energy per square foot than the national average. That translates directly into lower utility bills and lower emissions.

# Energy Performance · 11-Year District EUI Trend

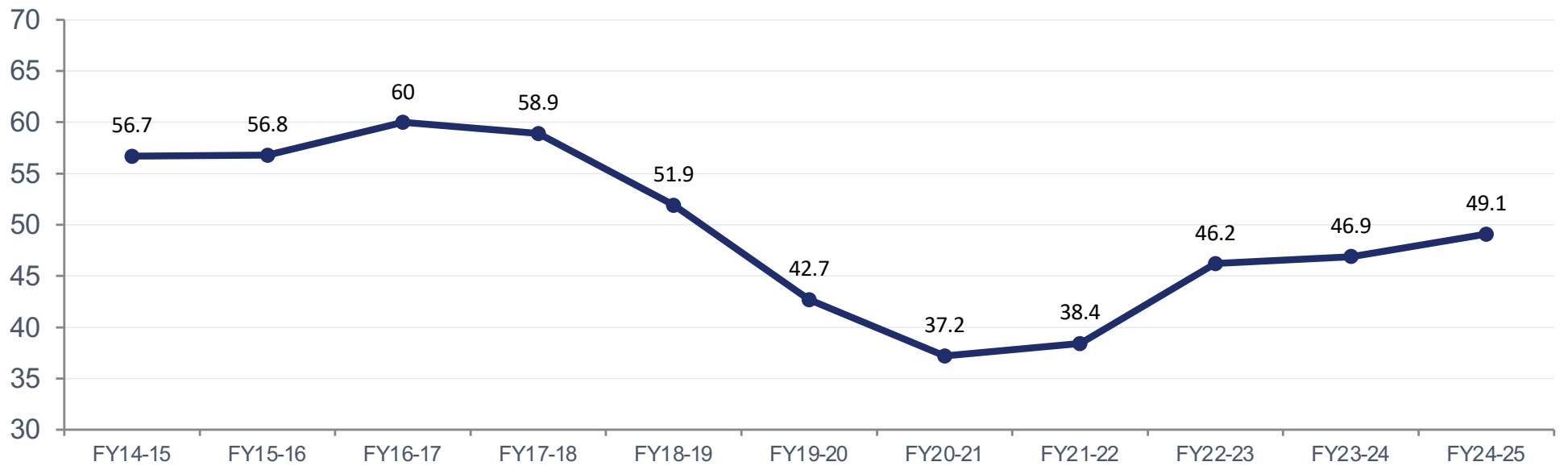
District EUI (kBtu/SF) · FY 2014-15 through FY 2024-25

**13.4**

kBtu/SF reduction since FY14-15

**FY20-21 low: 37.2**

Post-COVID reoccupation caused  
partial rebound - now stabilizing



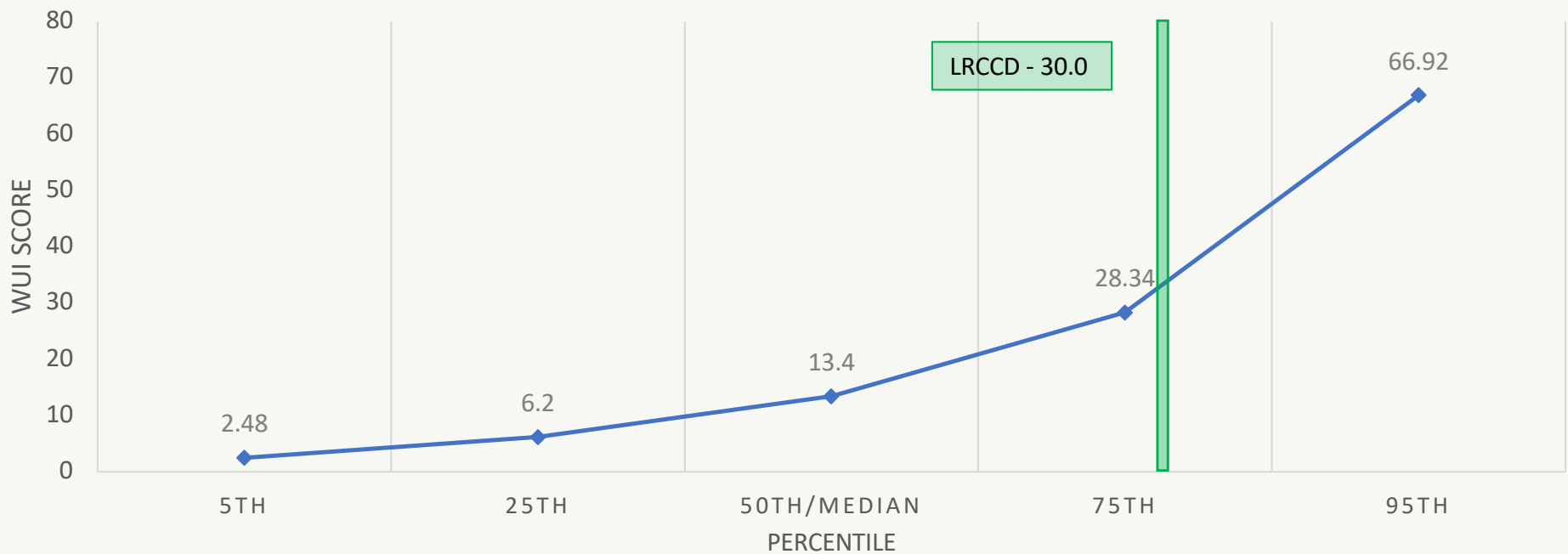
# Water Performance

*FY 2024-25*

# Water Performance · FY 2024-25

Water Use Intensity (Gal/SF)

## ENERGY STAR 2023 NATIONAL WATER USE - COLLEGE/UNIVERSITY (WUI – GAL/SQFT/YR)



# 2025 Focus Area: Metering = Visibility

*Optimizing performance through data-driven decisions*

# Metering Makes the Difference

*How utility data turns a suspicion into a decision - and dollars saved into dollars reinvested*

Step 1	Step 2	Step 3	Step 4
<b>Anomaly Detected</b> A campus building shows unusually high electricity - noticeably above similar buildings nearby.	<b>Data Investigated</b> Equipment-level meters show an HVAC unit cycling on nightly, midnight to 6am - when the building is empty.	<b>Waste Quantified</b> $50 \text{ kW} \times 6 \text{ hrs/night} \times 365 \text{ days} \times \$0.17/\text{kWh} = \$18,615$ wasted per year. Now we have a number.	<b>Decision Made</b> \$12,000 controls upgrade proposed. Payback: 8 months. Approved - because the data made the case.

The District Resource Intelligence Program (DRIP) makes this possible at scale - across all 139 buildings, all four campuses, automatically. Every dollar invested in metering infrastructure is a tool for making better capital decisions faster.

# Our Buildings · Why Investment Matters

139 buildings · oldest built 1929 · what history means for efficiency - and what we are doing about it

American River College	Cosumnes River College	Folsom Lake College	Sacramento City College
<b>GSF:</b> 1,451,460	<b>GSF:</b> 1,255,173	<b>GSF:</b> 575,842	<b>GSF:</b> 1,405,654
<b>ASF:</b> 844,416	<b>ASF:</b> 737,353	<b>ASF:</b> 383,217	<b>ASF:</b> 844,048
<b>Buildings:</b> 46	<b>Buildings:</b> 38	<b>Buildings:</b> 22	<b>Buildings:</b> 33
<b>Built:</b> 1936 – 2025	<b>Built:</b> 1970 – 2023	<b>Built:</b> 2001 – 2025	<b>Built:</b> 1929 – 2023
<b>Satellites:</b> incl. Natomas	<b>Satellites:</b> incl. Elk Grove, Rancho Cordova	<b>Satellites:</b> incl. El Dorado Ctr	<b>Satellites:</b> incl. Davis Ctr, W. Sac

District total · 139 buildings · 4,688,129 GSF · 2,809,034 ASF · Building age range: 1929 – 2025

**1. Visibility**  
 Primary meters: 100% identified  
**COMPLETE ✓**

**2. Accuracy**  
 Data validation & gaps closed  
**2025–26**

**3. Control**  
 Real-time monitoring  
**2026+**

**4. Optimization**  
 Capturing findings  
**2026+**

# Roadmap to 2026 Benchmarking

Three-phase plan: *Visibility* → *Accuracy* → *Compliance reporting*

## Meter Visibility

2025 (Complete ✓)

COMPLETE

- 93 primary meters identified - SMUD + PG&E
- All accounts campus-validated from official data
- Water accounts validated via billing records

## Data Integration

2025 – 2026 (Active Now)

ON TARGET

- Centralize utility data in single platform
- Complete 3-year trend analysis across all metrics

## Benchmark Reporting

2026

ON TARGET

- Submit CCCCCO-compliant benchmark data
- Lock official baseline year for all six metrics
- Full district sustainability report

# Our Path to 2026 · Required Actions

*Six actions the district is committed to completing before the 2026 CCCCCO benchmark filing*

1

## Complete meter-to-building mapping

Launch District Resource Intelligence Program (DRIP), repair/add building level meters to all buildings to enabling building-level energy benchmarking.

2

## Designate official baseline year

Formally designate CY2025 / FY2025-26 as the district's CCCCCO baseline year across all six metric categories.

3

## Water meter automation tracking

Identify opportunities for automating reporting of all water meters

4

## Conduct GHG Emissions Inventory

Complete the greenhouse gas inventory baseline required by CCCCCO and begin drafting the first LRCCD Climate Action Plan.

5

## Establish waste diversion baseline

Initiate campus waste audits at all four colleges to create a documented diversion baseline.

6

## CCCCCO deadline progress tracking

Continue to follow ongoing updates and reporting requirement deadline details for the BOG/CCCCCO

# What Achieving These Goals Requires

## Data Infrastructure

A unified utility data platform to replace disconnected spreadsheet tracking. Enables consistent meter-to-building mapping, normalized metrics, and annual CCCC reporting at scale. ENERGY STAR Portfolio Manager or equivalent under evaluation.

## Capital Projects in Pipeline

- CRC Central Utility Plant (CUP) replacement
- ARC Davies Hall modernization
- District-wide LED upgrade program
- Integrated Systems Optimization Program (ISOP)
- District Resource Intelligence Program (DRIP)

## Capital Program Alignment

Energy and water efficiency measures - HVAC replacement, lighting controls, BAS upgrades - must be integrated into the capital program prioritization process with ROI and avoided cost analysis.

## Funding & Incentives in Pursuit

ITC Solar Credit - EDC PV: \$1.2M–\$1.8M (sunsetting)  
SMUD Custom Retrofit - CRC CUP: ~\$60,000  
SMUD Custom Retrofit - ARC Davies Hall: ~\$350,000  
SMUD EV Program: ongoing incentives  
IRA §48, DOE grants, CEC storage & renewables programs under evaluation

# Thank You

*Questions & Discussion*

**Contact:**

Branden Gistlinck · Director of Sustainability · GistliB@LosRios.EDU

*District sustainability inquiries: Sustainability@LosRios.EDU*

## 2025 Annual Sustainability Report

---

Los Rios Community  
College District

ARC · CRC · FLC · SCC

*Aligned with CCCCCO  
2030 & 2035 Goals*