



Los Rios Community College District 2021-22 Redistricting



LOS RIOS
COMMUNITY
COLLEGE DISTRICT

What is Redistricting

Definition

Redistricting is the process of adjusting district lines every 10 years after the release of the U.S. Census. The well-known examples are Congress and the legislature.

Within the U.S., redistricting has become an extremely politicized process and has been the subject of more high-profile Supreme Court decisions than any other part of our elections system.

Traditional Redistricting Principles

Preventing a Redistricting from Becoming a Gerrymander

There are a number of criteria that have been used nationally and upheld by courts.

- Relatively equal size – people, not citizens
- Contiguous – districts should not hop/jump
- Keep districts compact – appearance/function
- Maintain “*communities of interest*”
- Follow city/county/local government lines

Communities of Interest

Bringing like-minded people together for representation

A community of interest includes ethnic and language minorities and other groups.

Communities covered by the Voting Rights Act

- Latinos
- Asians
- African Americans

While race is a community of interest, it cannot be the *predominant factor* in drawing districts.

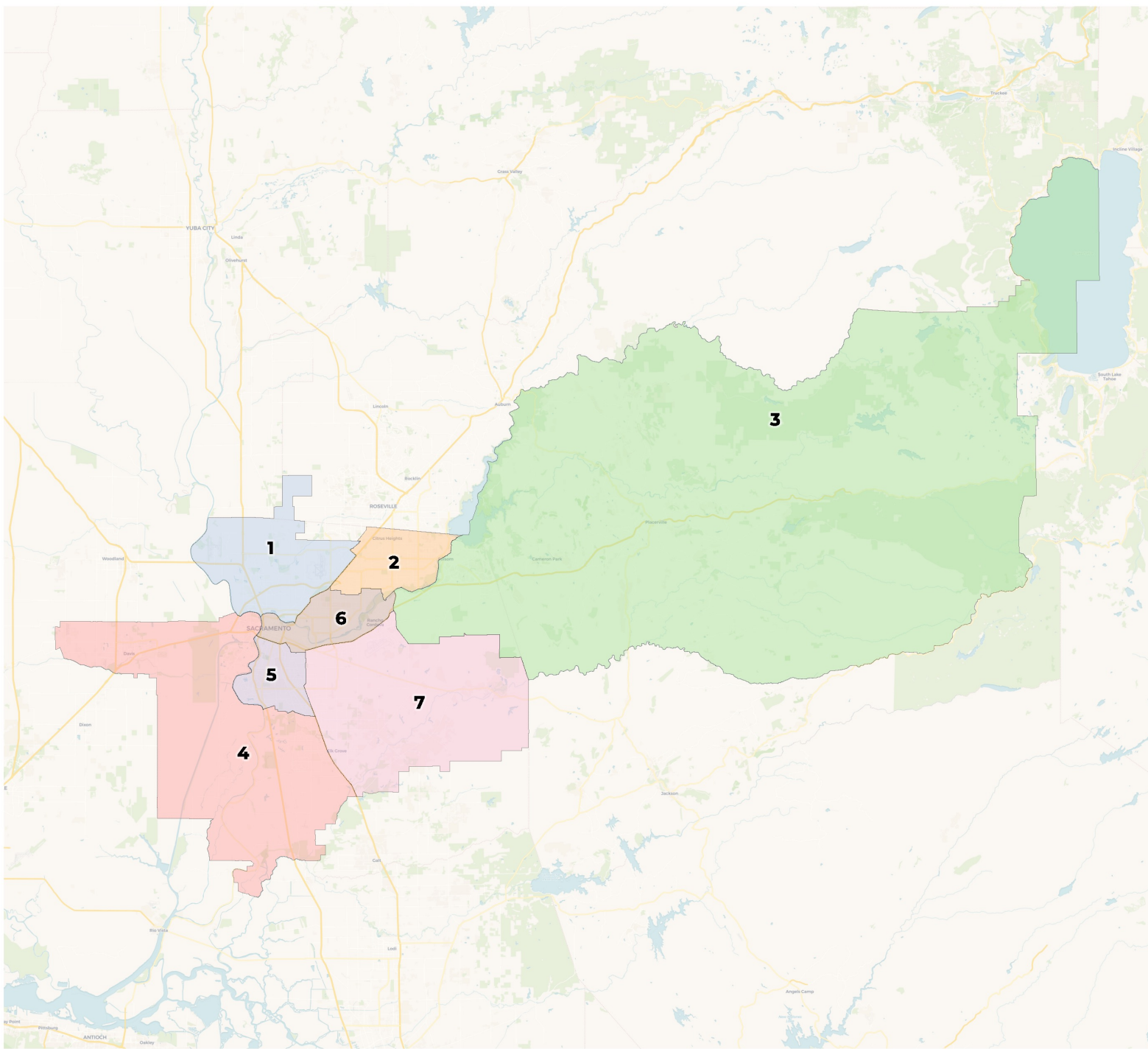
Fair Maps Act (2019)

Preventing a Districting from Becoming a Gerrymander

Starting in 2020, cities and counties doing redistricting have additional criteria they must follow under the California Fair Maps Act. This becomes a “best practice” for all agencies.

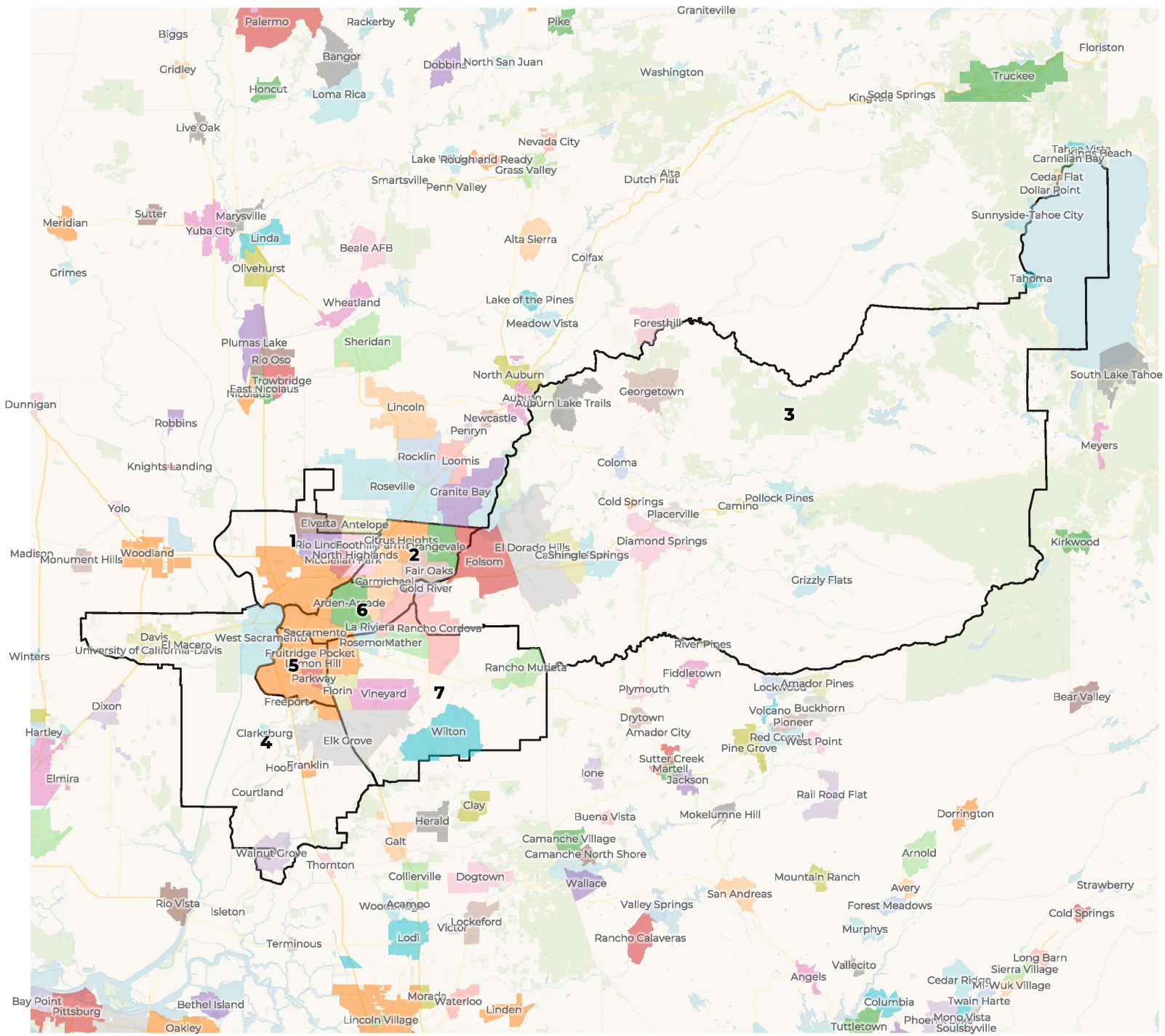
- Process/transparency when conducting redistricting
- Not using incumbent or candidate residence as a Community of Interest
- Not drawing districts to advantage a political party

These rules do not currently apply directly to college districts, but redistricting best practices will likely push most agencies to voluntarily adopting them.



REDISTRICTING PARTNERS

Los Rios CCD Current Lines with Cities



2020 Census

	1	2	3	4	5	6	7
Population	265,277	238,452	243,564	272,393	245,277	260,827	267,442
Deviation	9,101	-17,724	-12,612	16,217	-10,899	4,651	11,266
Deviation %	3.6%	-6.9%	-4.9%	6.3%	-4.3%	1.8%	4.4%
Other	108,404	178,303	184,170	119,729	82,197	162,430	110,151
Other %	40.9%	74.8%	75.6%	44.0%	33.5%	62.3%	41.2%
Latino	81,215	39,442	29,718	59,945	78,679	52,365	59,557
Latino %	30.6%	16.5%	12.2%	22.0%	32.1%	20.1%	22.3%
Asian	42,728	11,407	24,839	71,482	50,738	25,576	73,261
Asian %	16.1%	4.8%	10.2%	26.2%	20.7%	9.8%	27.4%
Black	32,930	9,300	4,837	21,237	33,663	20,456	24,473
Black %	12.4%	3.9%	2.0%	7.8%	13.7%	7.8%	9.2%

Citizen Voting Age Population (CVAP)

	1	2	3	4	5	6	7
Total CVAP	156,170	172,609	170,805	179,683	156,369	176,531	171,042
Other CVAP	76,606	139,438	141,856	93,935	62,992	122,034	84,516
Other CVAP %	49.1%	80.8%	83.1%	52.3%	40.3%	69.1%	49.4%
Latino CVAP	33,859	20,471	14,852	30,535	36,264	28,246	28,852
Latino CVAP %	21.7%	11.9%	8.7%	17.0%	23.2%	16.0%	16.9%
Asian CVAP	21,663	6,304	10,692	38,632	30,791	11,416	40,028
Asian CVAP %	13.9%	3.7%	6.3%	21.5%	19.7%	6.5%	23.4%
Black CVAP	24,042	6,395	3,405	16,581	26,323	14,836	17,647
Black CVAP %	15.4%	3.7%	2.0%	9.2%	16.8%	8.4%	10.3%

Los Rios Community College District Redistricting Process

Next Steps

- Redistricting Partners will create draft maps for review in January and would like the board to provide any feedback as to where changes might be made.

Los Rios Community College District Redistricting Process

Timeline for Upcoming Meetings

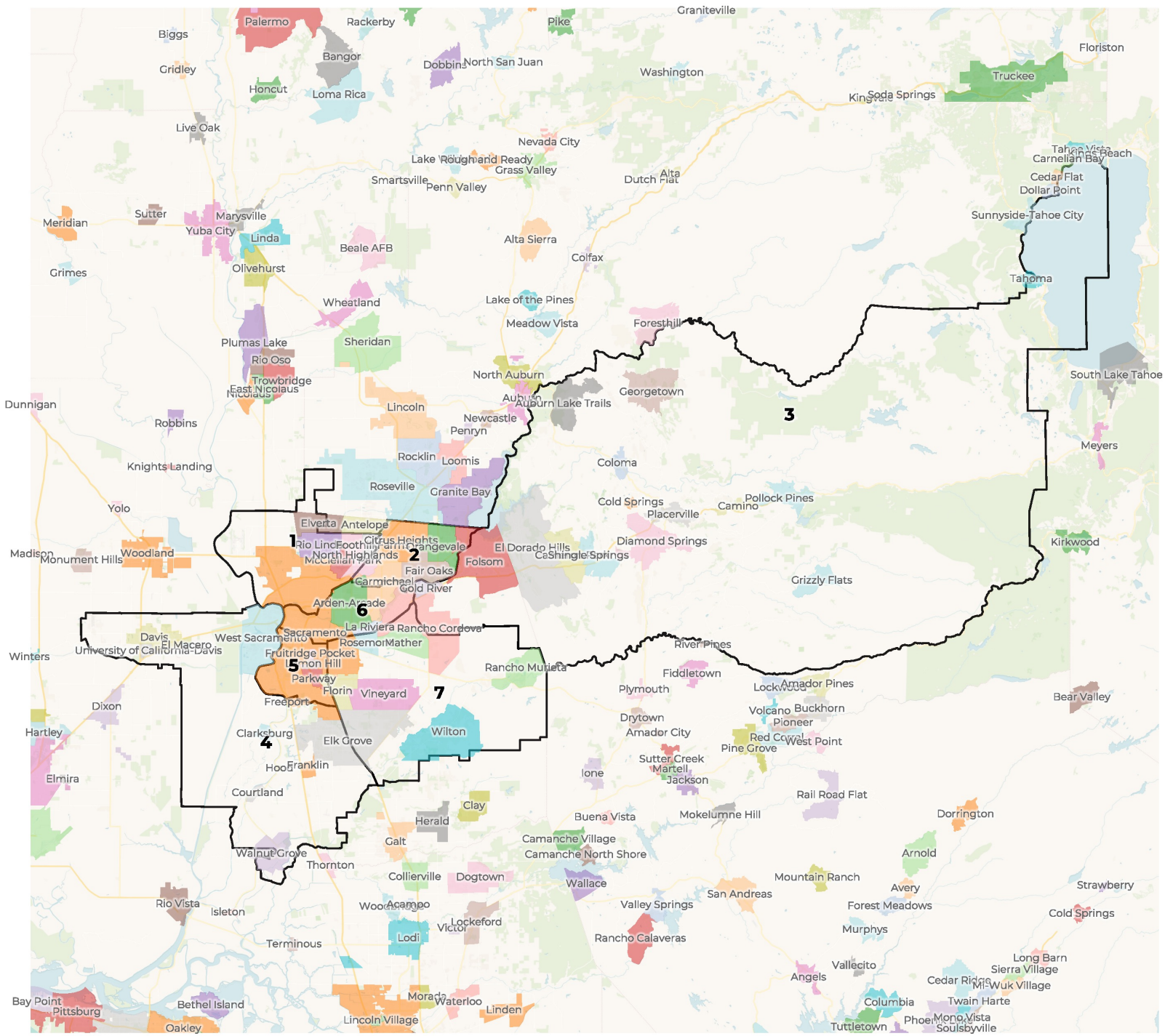
- December 15th, 2021 Redistricting Basics
- January 12th, 2022 Presentation of Draft Maps
- February 16th, 2022 Final Vote on Draft Maps



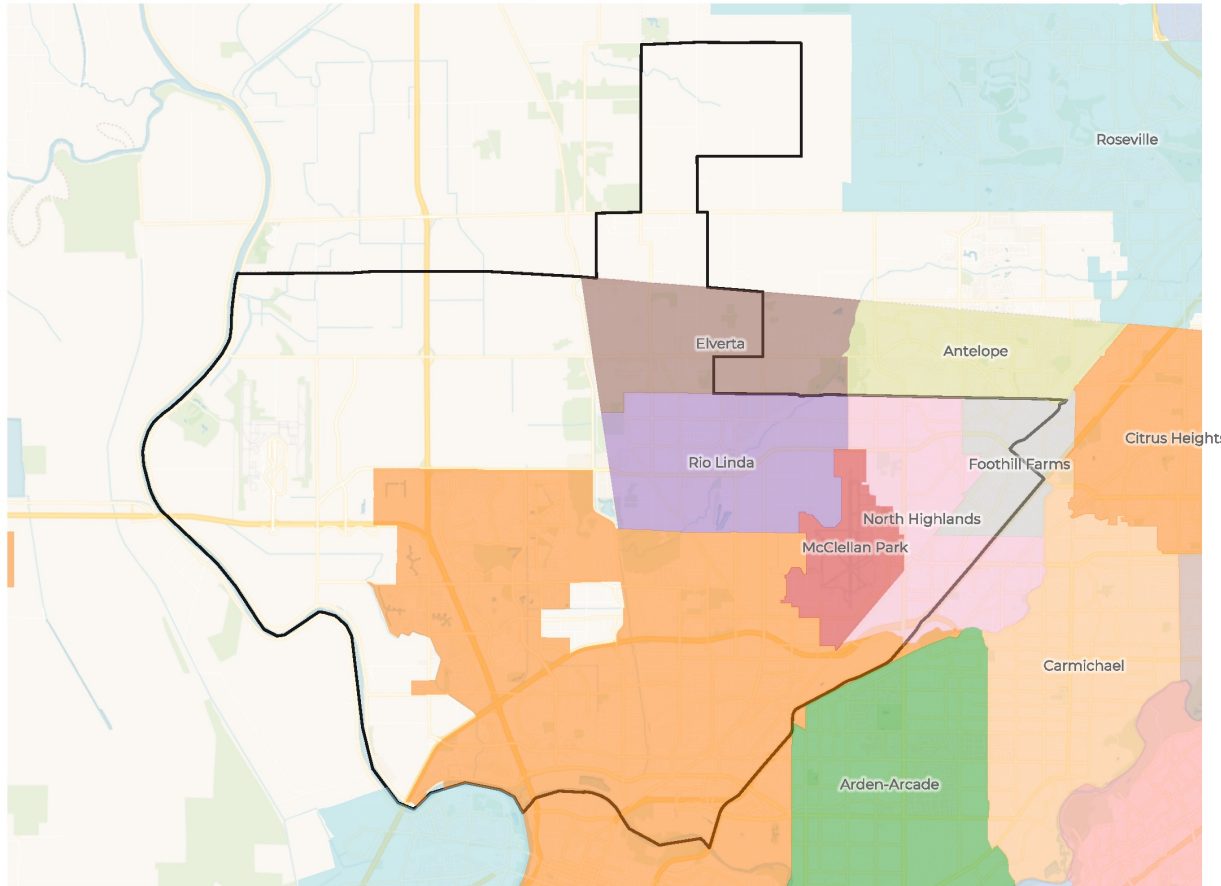
REDISTRICTING PARTNERS

REDISTRICTING PARTNERS

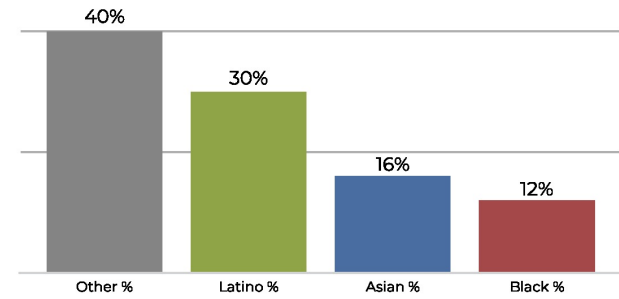
Los Rios CCD Current Lines with Cities



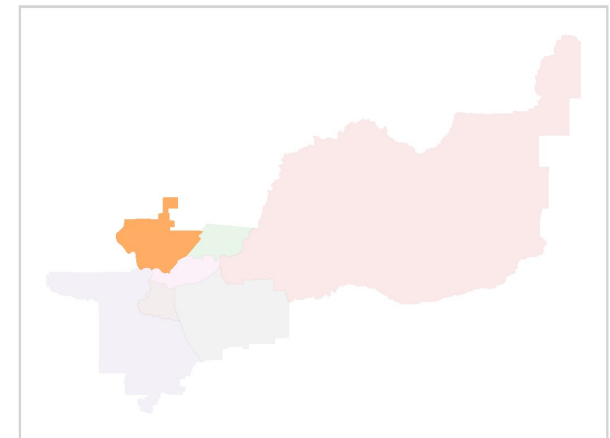
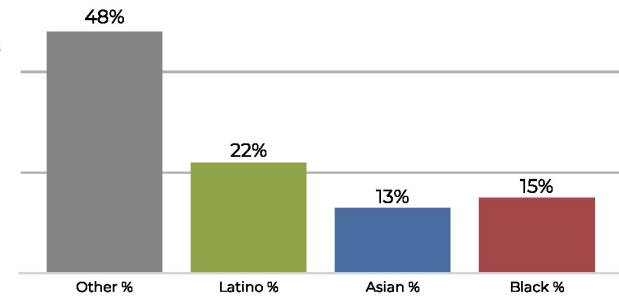
District 1



2020 Census

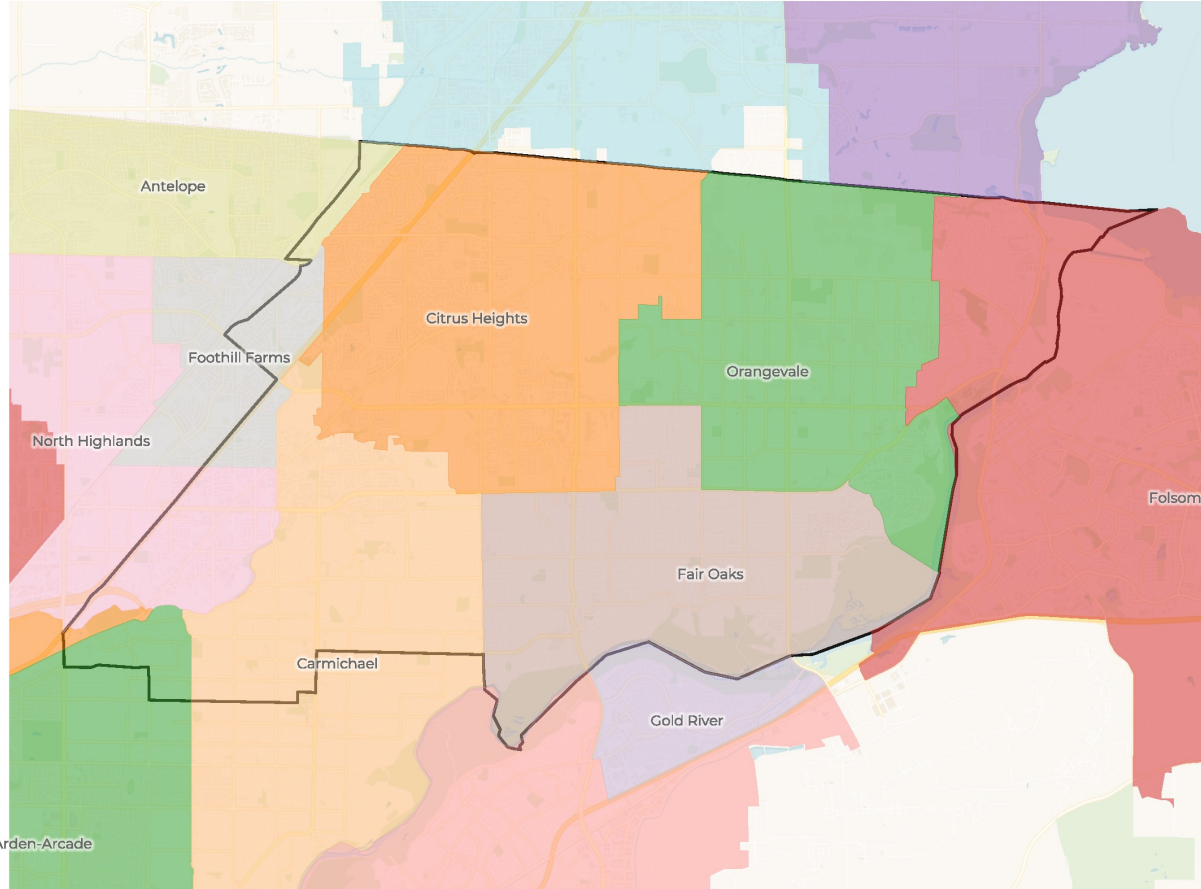


Citizen Voting Age Population

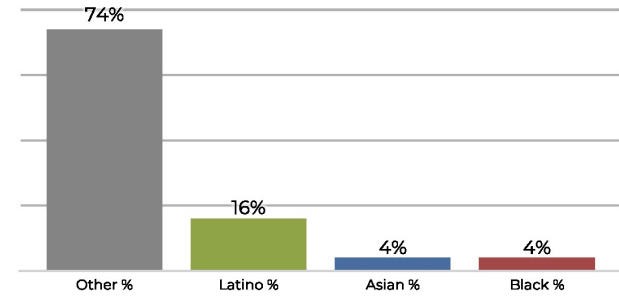


Population	Deviation	Deviation %	Other	Other %	Latino	Latino %	Asian	Asian %	Black	Black %
266,755	10,579	4.1%	108,915	40.8%	81,518	30.6%	42,746	16.0%	33,576	12.6%
Total CVAP	Other CVAP	Other CVAP %	Latino CVAP	Latino CVAP %	Asian CVAP	Asian CVAP %	Black CVAP	Black CVAP %		
160,403	77,465	48.3%	36,294	22.6%	21,982	13.7%	24,662	15.4%		

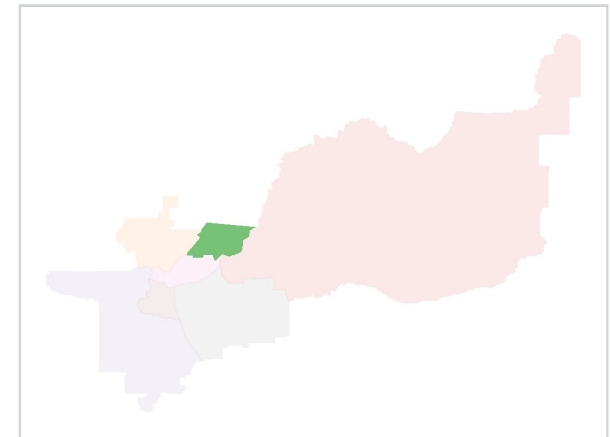
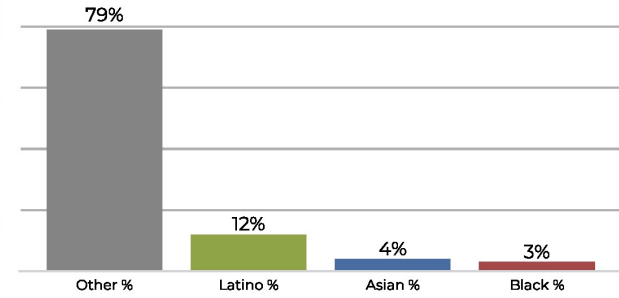
District 2



2020 Census

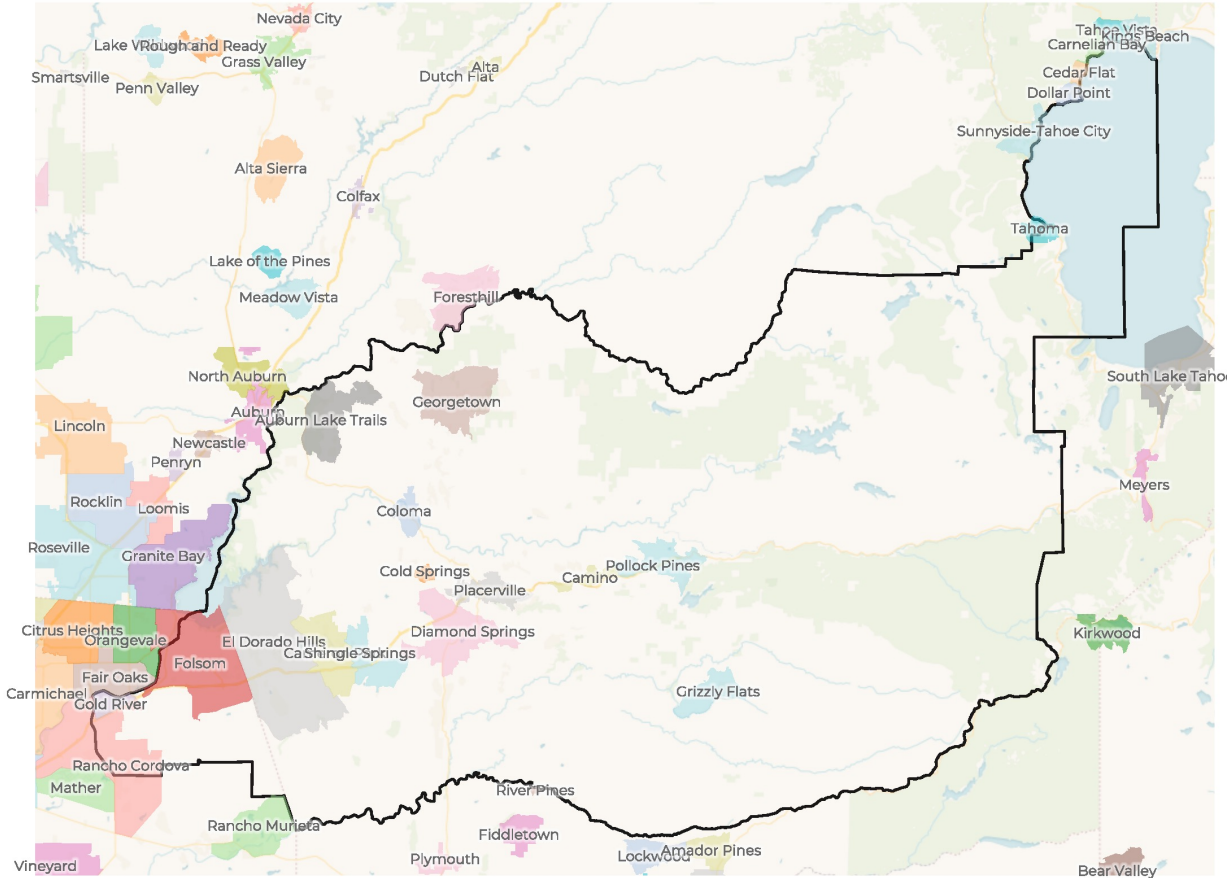


Citizen Voting Age Population

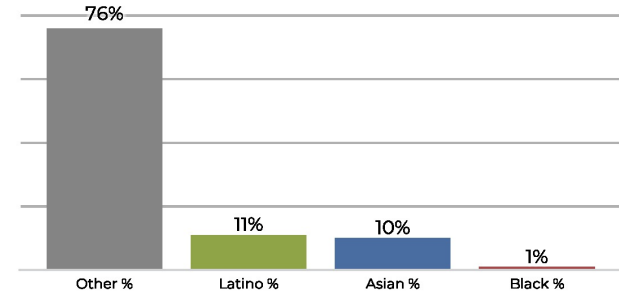


Population	Deviation	Deviation %	Other	Other %	Latino	Latino %	Asian	Asian %	Black	Black %
239,231	-16,945	-6.6%	178,685	74.7%	39,575	16.5%	11,412	4.8%	9,559	4.0%
Total CVAP	Other CVAP	Other CVAP %	Latino CVAP	Latino CVAP %	Asian CVAP	Asian CVAP %	Black CVAP	Black CVAP %		
175,149	139,774	79.8%	21,587	12.3%	7,227	4.1%	6,561	3.7%		

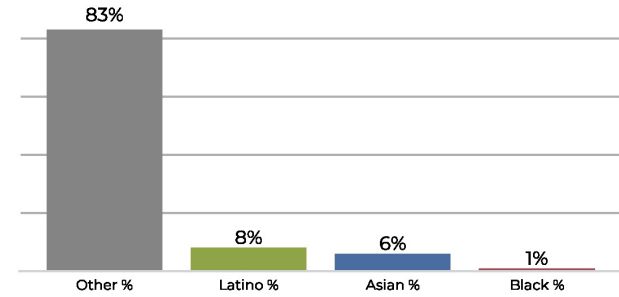
District 3



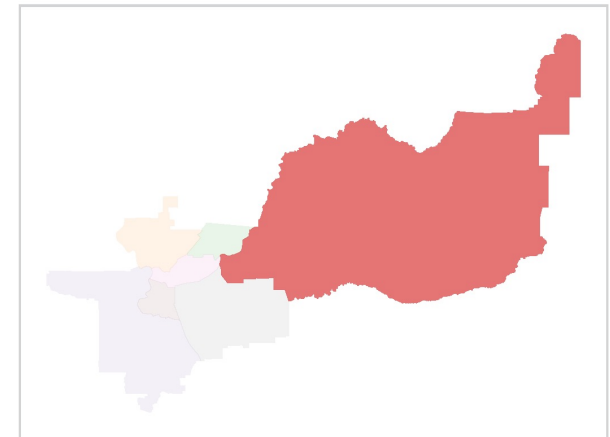
2020 Census



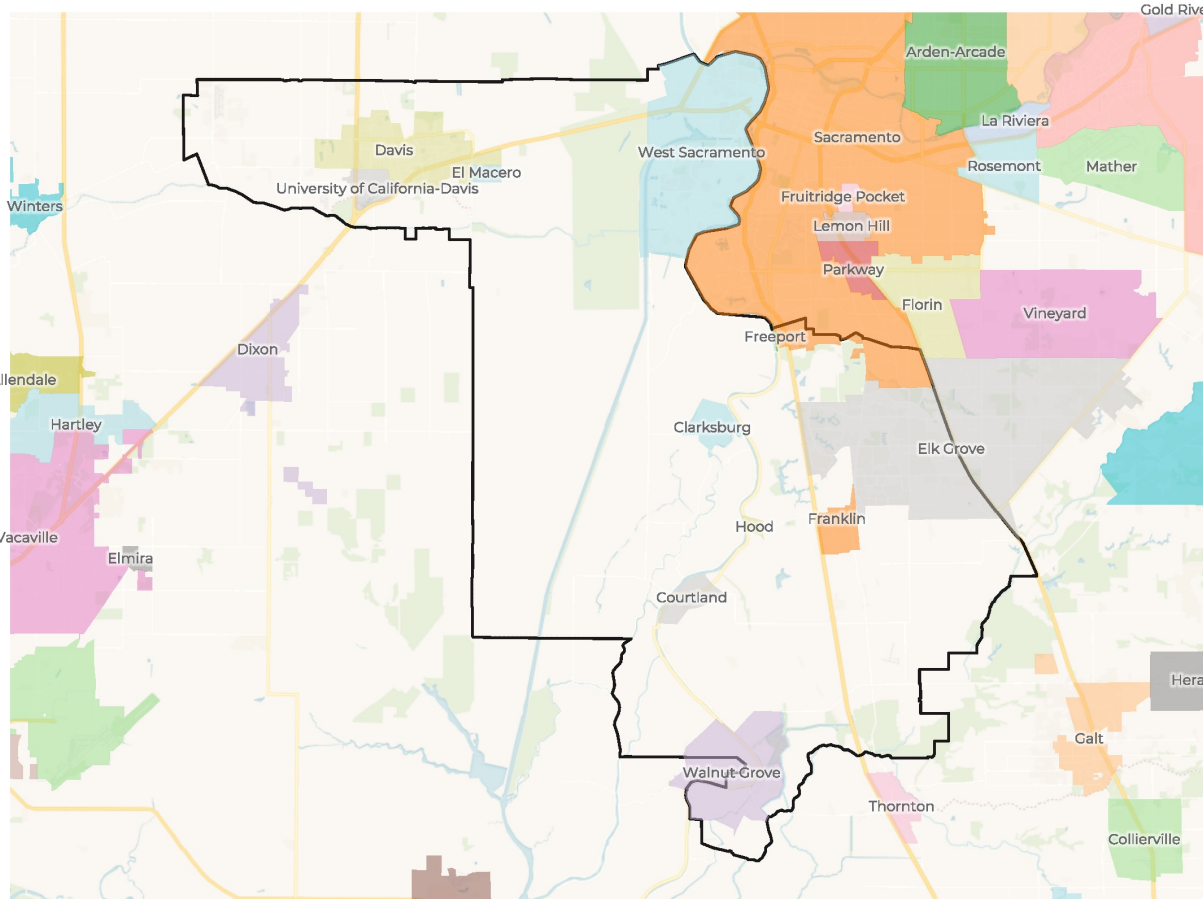
Citizen Voting Age Population



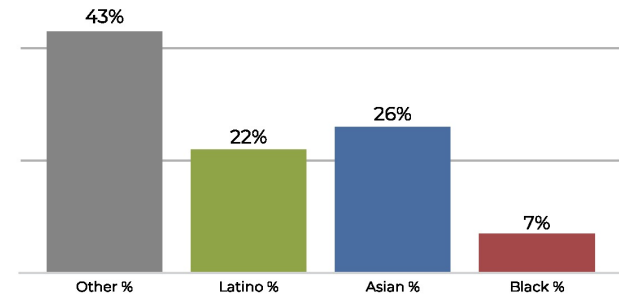
Population	Deviation	Deviation %	Other	Other %	Latino	Latino %	Asian	Asian %	Black	Black %
238,339	-17,837	-7.0%	183,215	76.9%	27,700	11.6%	24,745	10.4%	2,679	1.1%
Total CVAP	Other CVAP	Other CVAP %	Latino CVAP	Latino CVAP %	Asian CVAP	Asian CVAP %	Black CVAP	Black CVAP %		
170,735	143,262	83.9%	14,560	8.5%	11,184	6.6%	1,729	1.0%		



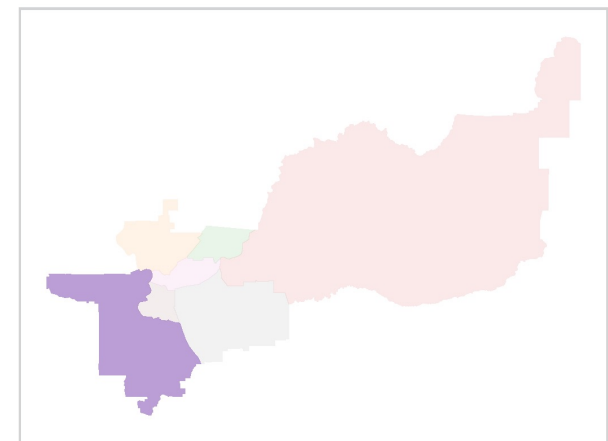
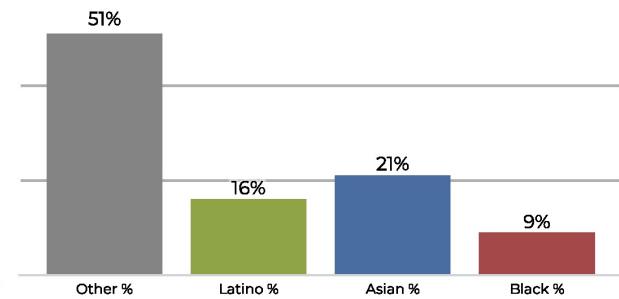
District 4



2020 Census

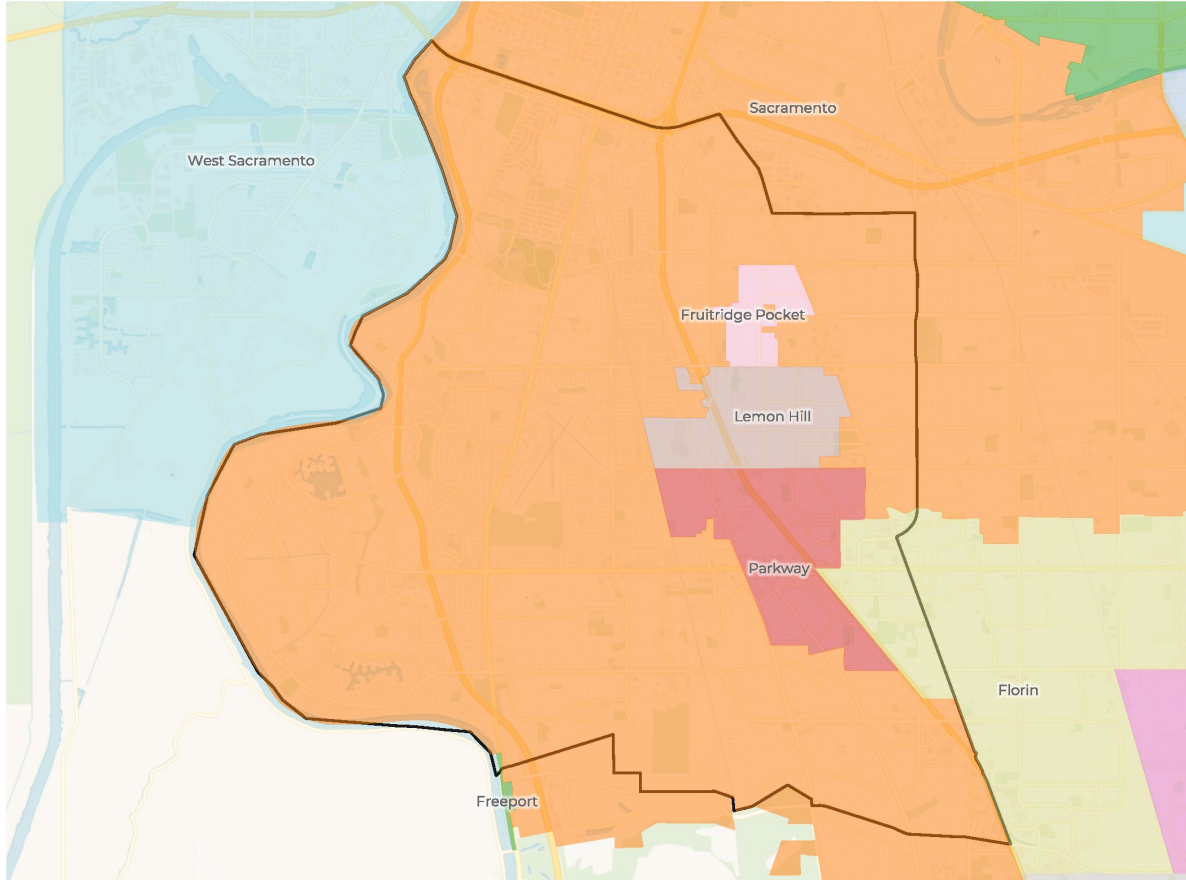


Citizen Voting Age Population

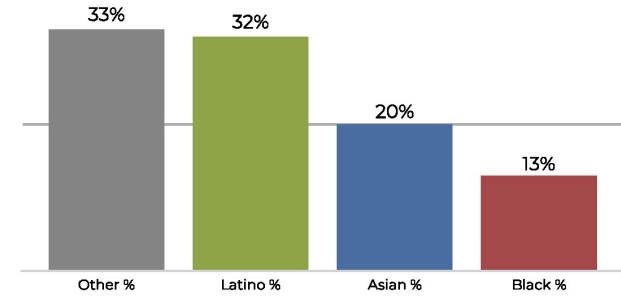


Population	Deviation	Deviation %	Other	Other %	Latino	Latino %	Asian	Asian %	Black	Black %
273,065	16,889	6.6%	119,944	43.9%	60,130	22.0%	71,507	26.2%	21,484	7.9%
Total CVAP	Other CVAP	Other CVAP %	Latino CVAP	Latino CVAP %	Asian CVAP	Asian CVAP %	Black CVAP	Black CVAP %		
182,853	94,694	51.8%	30,960	16.9%	40,098	21.9%	17,101	9.4%		

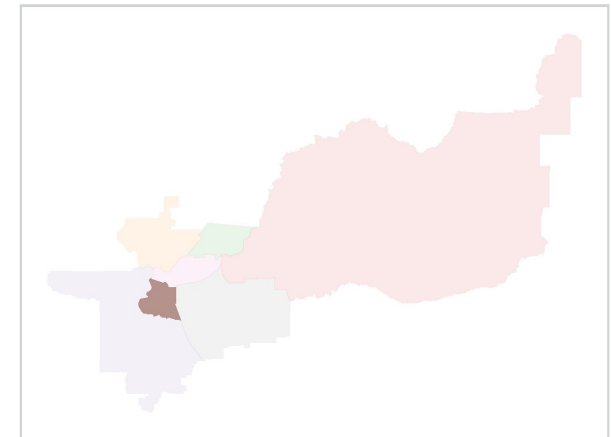
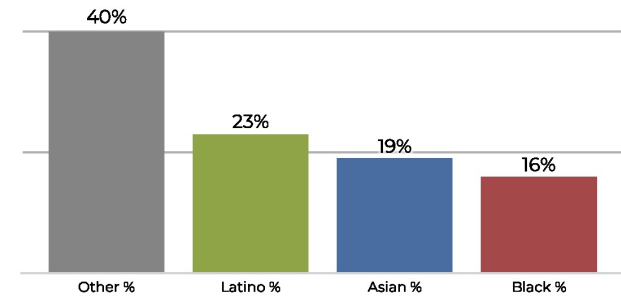
District 5



2020 Census

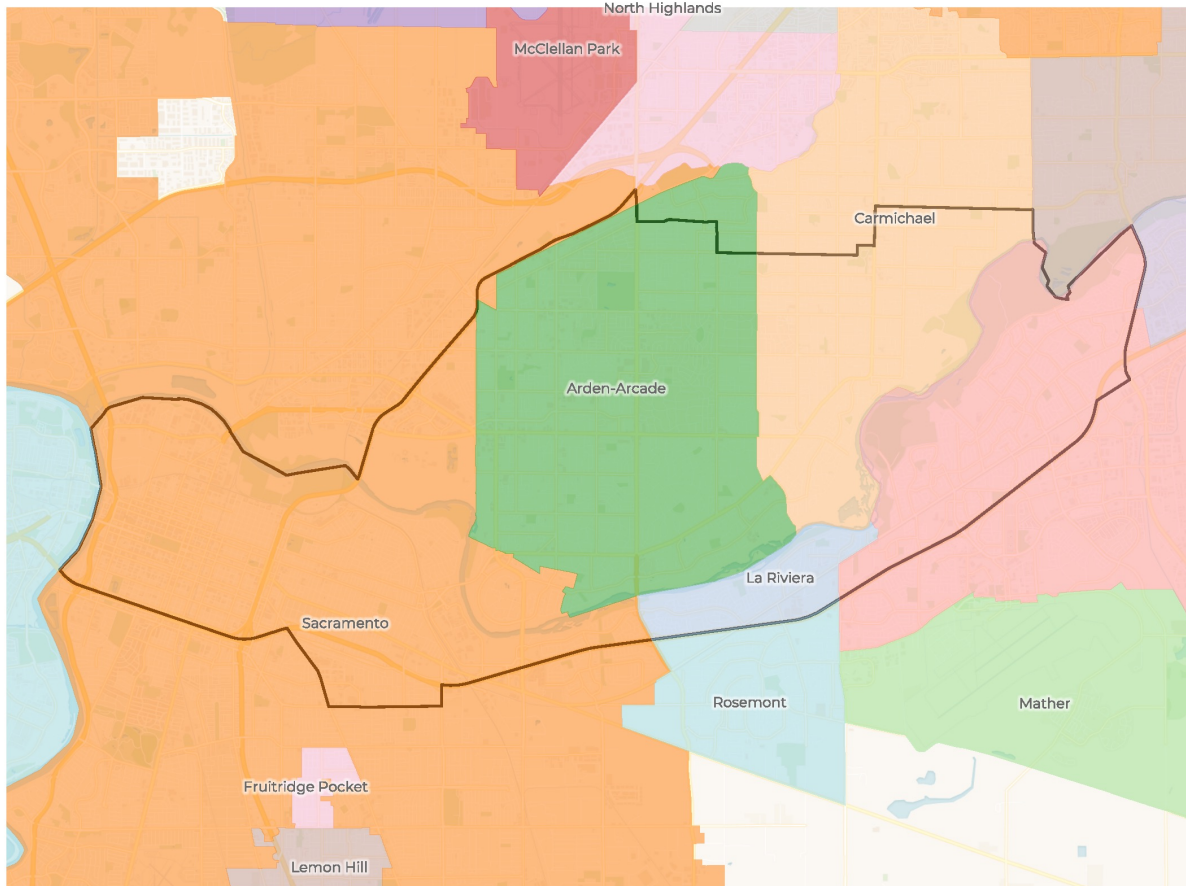


Citizen Voting Age Population

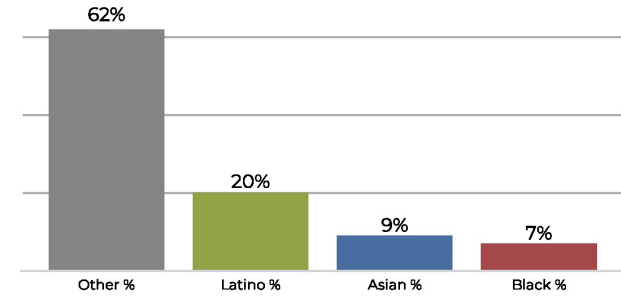


Population	Deviation	Deviation %	Other	Other %	Latino	Latino %	Asian	Asian %	Black	Black %
246,843	-9,333	-3.6%	82,592	33.5%	79,059	32.0%	50,768	20.6%	34,424	13.9%
Total CVAP	Other CVAP	Other CVAP %	Latino CVAP	Latino CVAP %	Asian CVAP	Asian CVAP %	Black CVAP	Black CVAP %		
160,607	65,396	40.7%	37,860	23.6%	31,641	19.7%	25,710	16.0%		

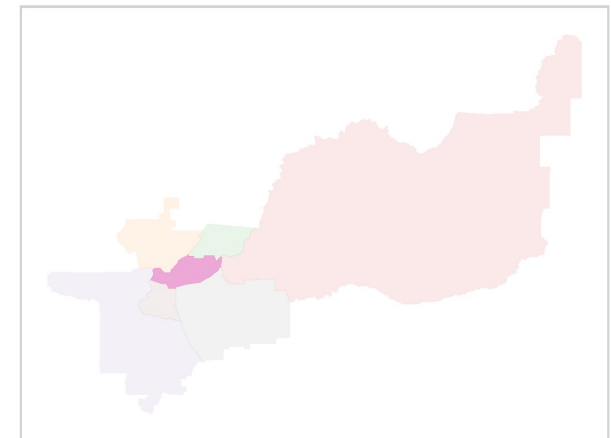
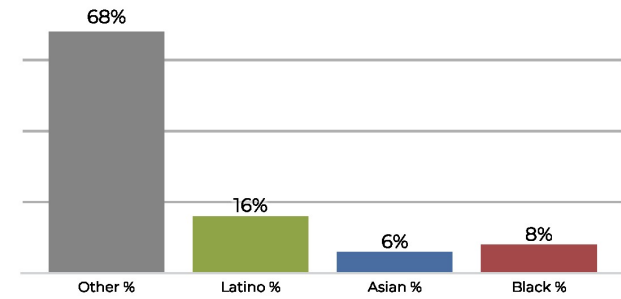
District 6



2020 Census

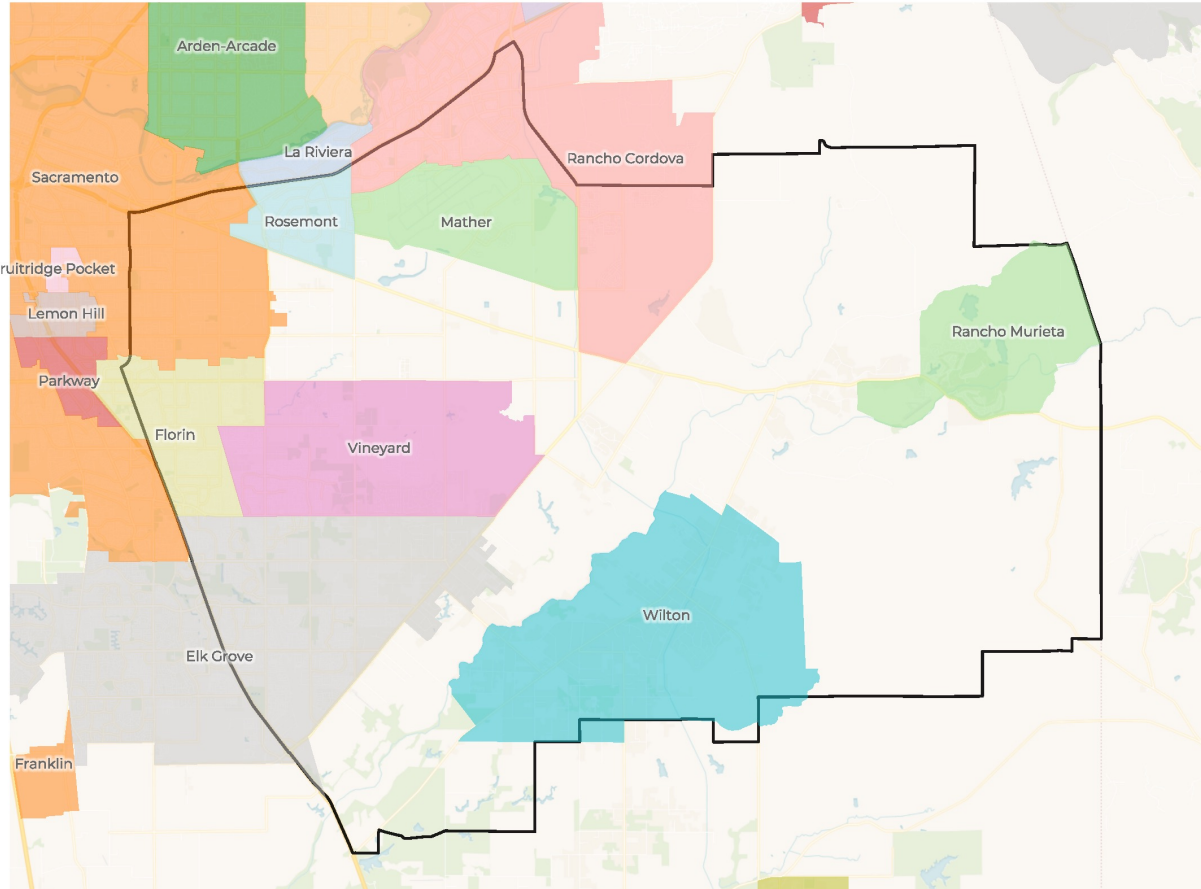


Citizen Voting Age Population

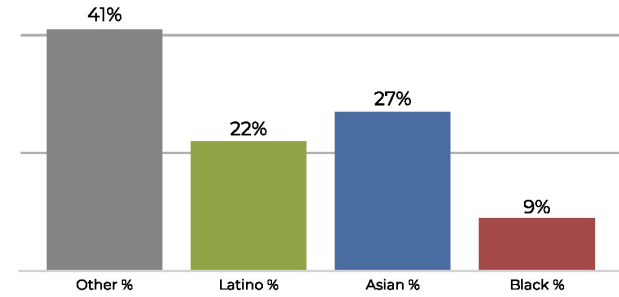


Population	Deviation	Deviation %	Other	Other %	Latino	Latino %	Asian	Asian %	Black	Black %
260,636	4,460	1.7%	162,371	62.3%	52,110	20.0%	25,586	9.8%	20,569	7.9%
Total CVAP	Other CVAP	Other CVAP %	Latino CVAP	Latino CVAP %	Asian CVAP	Asian CVAP %	Black CVAP	Black CVAP %		
178,595	122,271	68.5%	29,373	16.4%	11,542	6.5%	15,409	8.6%		

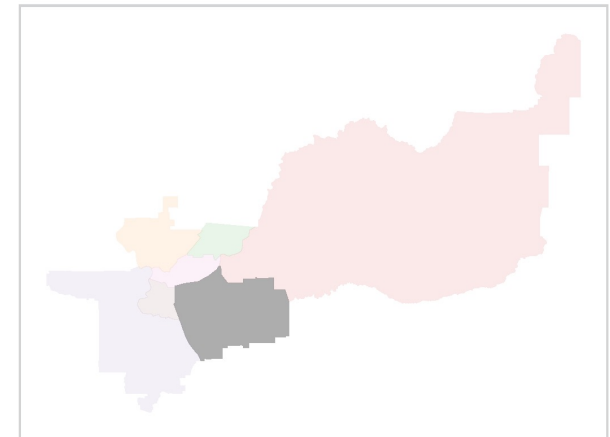
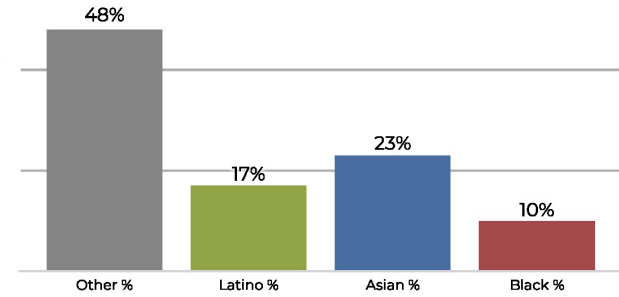
District 7



2020 Census



Citizen Voting Age Population



Population	Deviation	Deviation %	Other	Other %	Latino	Latino %	Asian	Asian %	Black	Black %
268,363	12,187	4.8%	110,433	41.2%	59,739	22.3%	73,300	27.3%	24,891	9.3%
Total CVAP	Other CVAP	Other CVAP %	Latino CVAP	Latino CVAP %	Asian CVAP	Asian CVAP %	Black CVAP	Black CVAP %		
172,229	83,710	48.6%	29,632	17.2%	40,184	23.3%	18,703	10.9%		