

LOS RIOS COMMUNITY COLLEGE DISTRICT

1919 Spanos Court, Sacramento, CA 95825
Phone (916) 568-3071 FAX (916) 568-3145
Purchasing Department

Sacramento City College American River College Cosumnes River College Folsom Lake College

ADDENDUM NO. 2

ISSUE DATE: FEBRUARY 22, 2019

SCC Imron Access Control
LRCCD BID NO. 19014

Issued By:

LOS RIOS COMMUNITY COLLEGE DISTRICT
1919 Spanos Court, Sacramento, CA 95825
Phone (916) 568-3071 Fax (916) 568-3145

This addendum forms a part to the Contract Documents. The addendum items supersede and supplement all portions of the bidding documents with which it conflicts. All workmanship, materials, appliances and equipment which may be included in the following addendum items shall be of the same relative quality as described for similar work set forth in the general or main specifications of which these addendum items shall be considered a part.

This Addendum has been acknowledged in the space provided on the Bid Form and is considered part of the bid documents.

This Addendum consists of 11 pages.

END OF SECTION.



Los Rios – Sacramento City College - Bid Walk Questions and Answers

Q1 & 2. The bid states that only a C7 is required for the project; however, it appears as though you are desiring work of a C10 to provide power to the lockboxes. Is this C10 work to be performed by others (provided by the District) or is a C10 required to bid this project? If the 120V power is to be provided by the Imron contractor, where are the circuits that the lockboxes are being connected to located? The project cannot be bid without this information.

A1. A qualified contractor is required to perform any work associated with the project. Lock boxes are located directly adjacent to existing 120v outlets. See attached exhibit specifying distance to power at all panel locations.

Q3. The time frame of 90 days from the notice to proceed, while only working night shifts, will call for a large allocation for liquidated damages, bringing the sum of the bid much greater than the estimate for the Imron Access Control Bid #19014; therefore, it would be in the districts best interest to expand the time frame for completion of this job.

A3. Project duration has been revised from 90 days to 150 days.

Q4. There are 12 temporary buildings listed on the site plan, are these buildings excluded from the bid?

A4. Temporary Building #1 is the only temporary building to receive Access Control, see sheet S-13-A210.

Q5. On the cover sheet (page S-0-A000,) Project Notes number 5 specifies 2 cat5e and 2 14/4 being ran to each sub panel; however, there is not a 14/4 wire specified. What part number is the wire that is to be used in this situation?

A5. See revised Cable Schedule on sheet S-0-A000 in Addendum #2. This revised Cable schedule shall replace all others in the plan set.

Q6. Will the districts electrician be installing the pathway that was specified on the walk prior to the notice to proceed?

A6. District will install pathway between Campus Operations and Reprographics only.

Q7. On the cover sheet (page S-0-A000,) the General Installation Scope Requirement, number 3, states that the contractor shall provide the district/design consultant with shop drawings to be approved prior to work being performed as outlined in the specifications (section 01 33 00 part 1.6 shop drawings) any and all work performed without district/design consultant approval shall be at the sole risk and cost of contractor. This statement means that we will need to survey the site prior to installation, which, per our discussion on the walk, is not a reasonable request when taking into



"No Limitations"

KMM Services, Inc.

5433 El Camino Ave., Suite 5

Carmichael, CA 95608

Phone 916.359.4000 - Fax: 916.520.3831

consideration the time frame that this job has to be completed. We are requesting that the district does not require shop drawings prior to work being completed.

A7. Note, these drawings are performance documents only. Shop drawings will be required prior to installation.

Q8. Cable type C-1 is discontinued, what should the replacement cable be?

A8. See revised Cable Schedule on sheet S-0-A000 in Addendum #2. This revised Cable schedule shall replace all others in the plan set.

Q9. On Page S-0-A005 #2 states that Owner will furnish cabinet w/ dual removable back plates, does this the owner will be providing the Mier Cans, part # BW-LRC103?

A9. Note #2 on S-0-A002 has been removed, contractor to provide Mier Can, Part # BW-LRC103 rev A at all locations not specified as being provided by district as per plan.

Q10. On page S-0-A002, #2 it states that the Firelite battery box part number bb-25 is to be used; however, this is a Notifier part number, does this require the Notifier BB-25 or the Firelite BB-26?

A10. Note revised as per Add-02, product is Notifier BB-25.

Q11. When there are existing sub panels on the drawings and there are data drops, are those data drops included in the scope of work or are they already existing?

A11. Per Note #5 on S-0-A000, a sub panel would not require a data drop it will be connected to the main panel via 2 cat5e and 2 14/4 (C-7) cables, however data at existing operational sub panel locations are assumed to be viable. If existing panel locations are moved, testing and possible re-pulling is required, splicing is not acceptable.

Q12. What specific instances require penetrations from floor to floor necessary to get wires back to the sub or main panels? If there are situations that require penetrating floors, please state if we need to xray for post-tension?

A12. All multi-level buildings will require some form of floor to floor penetration, final locations of penetrations to be shown on contractor shop drawings. Structural xray's are required.

Q13. Is all conduit in the garage EMT? Do we need to x-ray for post tension in the garage?

A13. All conduit installed shall be Rigid and xray's are required for all structural penetrations.

Q14. Which elevators will be integrated into the access control system? A count and door number is necessary in order to bid this portion of the project.

A14. 1 elevator at LRC shall receive a reader, part # 940nnntek2037p, on all levels to allow for access. Elevator is indicated with a square "R".



Q15. In LRC can you provide as-builts, prior to bid in order to comprehend how the wiring is to get to the three main doors at the front entrance?

A15. District has pre-pulled wire to this location for the contractor.

Q16. Are there any locations that will require fiber to integrate the readers or any other portion of this project? And if there are locations that require a fiber connection, where will we be accessing the fiber from?

A16. No.

Q17. Are we to surface mount the readers on all doors?

A17. All readers to be either mullion (preferred) or wall mounted.

Q18. To confirm, the Auto Door Operators are to remain where they are noted in the plans? Also it is not stated which wire is to be pulled to these locations?

A18. All Circle "AO" locations are intended to diagrammatical to specify there is an existing Auto Opener, use wire type C-3 to pull to operators.

Q19. Will there be a room that the contractor will have access to in order to store tools and product on site?

A19. Contractor should plan on providing their own storage.

Q20. Is this job to be bid on the plans and specifications or is it design build?

A20. Bid is based on plans and specs. This is not a design build project.

Q21. We are to assume that the \$70,000 allowance that is to be included in the base bid is including the tax allocated to this allowance.

A21. Refer to specification section 01 2100 for questions regarding allowance.

Q22. Is the 120v work to be done by the access control contractor (19014) or is that a part of the door hardware bid (19015)?

A22. Access Control Contractor (19014)

Q23. Per the bid walk there was a location where it was stated that the building is to be demolished in the coming years; therefore, it is established that the wire runs will not have to be per specification? What exactly does this mean? Are we required to hang the wires on j-hooks? Are we required to Velcro or secure? Is conduit required?

A23. Construction is to reflect current site conditions, deviation from this will be at the Districts discretion.

SCC ACCESS PROJECT

Response to Bid RFI #1 & #2 - Power for Panels

Building	Floor	Panel Location	Panel Proximity to Power
Rodda Hall North	1	North	Power available within 10ft
	2	South	Power available within 10ft
Rodda Hall South	1	Janitors Closet	Power available within 20ft.
	2	Storage 287	Power available within 10ft.
Lillard Hall	1	Lounge 105A	Power available within 100ft
Learning Resource Center	1	South Mech Room	Power at location
Business Learning	1	Server Room 120	Power available within 100ft
Union Stadium	1	None	
South Gym	1	Receiving Telco Room	Power available within 50ft
Cafeteria	1	None	
North Gym	1	North	Power at location
Hoos Pool	1	Electrical Room	Power available within 50 ft
Lusk Aeronautics	1	North	Power at location
	2	South	Power at location
Fine Arts	1	South	Power at location
Performing Arts	1	South	Power at location
Technology	1	South	Power available within 100ft
Cosmotology	1	East Elect Room	Power within 10 ft
Student Services	1	West	Power at location
Child Development Center	1	South Stairwell	Power available within 50ft
Ops / Repro	1	Repro Shop 002	Power available within 50ft
Hughes Stadium	1	Storage 9	Power at location
	1	Storage 16B	Power at location
Parking Structure	Basement	Storage 130	Power available within 100ft



KMM SERVICES, INC
TECHNOLOGY & ELECTRICAL ENGINEERS

5433 El Camino Ave. Suite 5
Carmichael, CA 95608
Office: (916) 359-4000 Fax: (916) 520-3831
www.kmm-services.com

LICENSE STAMPS

PRELIMINARY DOCUMENTS
NOT FOR CONSTRUCTION

These documents have not been completely reviewed by KMM Services, Inc. or by the building official. These documents are not to be used for construction. Any construction performed based on these documents is the responsibility of those making the bid or performing construction. These documents have been issued as an engineering progress check set or for use of the building official.

Copyright © 2017

These drawings and specifications and the ideas, designs and arrangements represented thereby are and shall remain the property of KMM Services, Inc. and no part thereof shall be copied, disclosed or used in any way without the written consent of KMM Services, Inc. Visual contact with these drawings or specifications shall constitute conclusive evidence of these restrictions.

IF DRAWING IS NOT 30"x42" IT IS A REDUCED PRINT

SHEET REVISIONS

Table with columns: DELTA, DESCRIPTION, DATE. Row 1: ADDENDUM 02, 2019-02-22

SITE KEY PLAN



APPROVALS

LOS RIOS COMMUNITY COLLEGE DISTRICT

SACRAMENTO CITY COLLEGE

PROJECT
LOS RIOS CCD
IMRON ACCESS CONTROL AND ELK INTRUSION SACRAMENTO CITY COLLEGE
3835 FREEPORT BLVD.
SACRAMENTO, CA. 95822

SHEET TITLE

COVER SHEET

DRAWING STATUS

BID SET DOCUMENTS

Table with columns: PROJECT NO., BID PACKAGE, DESIGNED BY, SCALE, ISSUE DATE, WORKING DATE. Values: --, --, KMM, AS PER PLAN, 2019-01-11, 2019-02-21

SHEET

S-0-A000

PROJECT CODES AND STANDARDS:

PARTIAL LIST OF APPLICABLE CODES AND STANDARDS EFFECTIVE : JANUARY 1, 2017
2016 CALIFORNIA ADMINISTRATIVE CODE (CAC), CCR, TITLE 24, PART 1
2016 CALIFORNIA BUILDING CODE (CBC), CCR, TITLE 24, PART 2 (2015 INTERNATIONAL BUILDING CODE WITH CALIFORNIA AMENDMENTS)
2016 CALIFORNIA ELECTRICAL CODE (CEC), CCR, TITLE 24, PART 3 (2014 NATIONAL ELECTRICAL CODE WITH CALIFORNIA AMENDMENTS)
2016 CALIFORNIA MECHANICAL CODE (CMC), CCR, TITLE 24, PART 4 (2015 UNIFORM MECHANICAL CODE, WITH CALIFORNIA AMENDMENTS)
2016 CALIFORNIA PLUMBING CODE (CPC), CCR, TITLE 24, PART 5 (2015 UNIFORM PLUMBING CODE, WITH CALIFORNIA AMENDMENTS)
2016 CALIFORNIA ENERGY CODE, CCR, TITLE 24, PART 6
2016 CALIFORNIA FIRE CODE (CFC), CCR, TITLE 24, PART 9 (2015 INTERNATIONAL FIRE CODE, WITH CALIFORNIA AMENDMENTS)
2016 CALIFORNIA GREEN BUILDING STANDARDS CODE, CCR, TITLE 24, PART 11
2016 CALIFORNIA REFERENCED STANDARDS CODE, CCR, TITLE 24, PART 12
2016 NFPA 72: NATIONAL FIRE ALARM AND SIGNALING CODE, NATIONAL FIRE PROTECTION ASSOCIATION

COMMON DEMO NOTES:

- 1. COMMON SHEETS NOTES MAY NOT BE REFERENCED ON ALL SHEETS.
- 2. CONTRACTOR TO REPORT ANY DOOR DEFICIENCIES OR DOOR REPAIRS TO DISTRICT IN A WRITTEN REPORT FOR REVIEW PRIOR TO ANY ACTION BY THE CONTRACTOR.

PROJECT GENERAL NOTES:

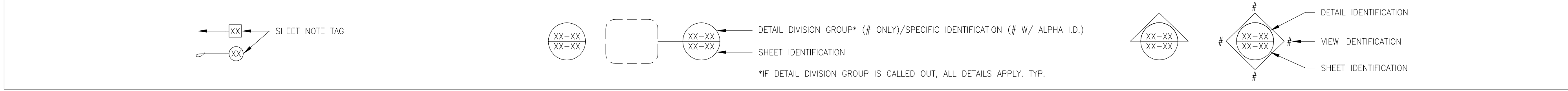
- 1. CONTRACTOR IS RESPONSIBLE TO PROVIDE A FULLY FUNCTIONAL AND OPERABLE DOOR OPENING.
- 2. CONTRACTOR SHALL PROVIDE AND INSTALL ALL ASSOCIATED DIVISION 28 ACCESS CONTROL DOOR HARDWARE EQUIPMENT AND/OR COMPONENTS AS REQUIRED.
- 3. CONTRACTOR SHALL COORDINATE FINAL ACCESS CONNECTIONS AND INSTALLATION WITH HARDWARE CONTRACTOR.
- 4. ALL SUB PANEL LOCATIONS TO BE SETUP EXACTLY THE SAME AS HEADED LOCATIONS.
- 5. ALL SUB PANEL LOCATIONS TO HAVE ELK CABLE TIE (and 2 cat5e run back and connected to main panel)
- 6. ALL WIRES FROM DOOR LEAF TO BE HOMERUN TO PANELS AS INDICATED PER PLAN.
- 7. ALL UNUSED EQUIPMENT, DEVICES AND/OR MATERIALS TO BE RETURNED TO THE DISTRICT PRIOR TO COMPLETION.
- 8. DEMO ALL EXISTING LOCKNETICS LOCATIONS AND RETURN THE HARDWARE AND DEVICES TO DISTRICT IN CLEAN WORKING CONDITION.
- 9. THHN WIRE, NOT ALLOWED
- 10. EXPOSED CABLES SHALL BE SUPPORTED AND PROTECTED PER NEC 70.760 AND NFPA 72.
- 11. NO SPLICES IN UNDERGROUND APPLICATIONS, GROUND BOXES, EXTERIOR MOUNTED BOXES, OR J-BOXES.
- 12. ALL LOCK BOX AND EMERGENCY DOGGING RELEASE BUTTON LOCATIONS ARE TO BE APPROVED BY A DISTRICT REPRESENTATIVE.

SHEET INDEX:

Table with columns: SHEET NO., DESCRIPTION. Lists sheets S-0-A000 through S-36-A210 with their respective descriptions.

SYMBOL LEGEND:

Table with columns: ID, SYMBOL, DESCRIPTION, CONDUIT, HEIGHT A.F.F. U.A.D. ON FLOOR PLANS, WALL BOX, MANUFACTURER, MODEL, NOTES. Lists various symbols and their corresponding hardware and specifications.

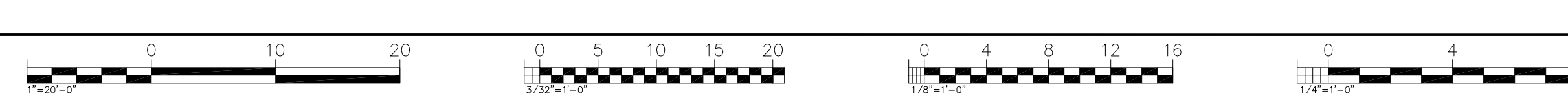


CABLE SCHEDULE table with columns: TAG ID, DESCRIPTION, MFR., PART NO., MFR., PART NO. Lists cable specifications for various tags.

ADD-02 NOTE:
1. CHANGES TO THIS CABLE SCHEDULE IS TO BE APPLIED TO ALL SHEETS WITH A CABLE SCHEDULE INCLUDED.

GENERAL INSTALLATION SCOPE REQUIREMENTS:

- 1. THESE ELECTRONIC ACCESS DRAWINGS ARE FOR PERFORMANCE DESIGN USE ONLY AND NOT INTENDED FOR CONTRACTOR MATERIALS, QUANTITIES, AND INSTALLATION CONSTRUCTION DOCUMENT.
- 2. PROJECT SHALL INSTALL NEW OR ADD TO EXISTING SECURITY (ELK) AND ACCESS (IMRON) SYSTEMS IN A MANNER THAT WILL NOT DISABLE EXISTING SYSTEMS MORE THAN 24 HOURS.
- 3. CONTRACTOR SHALL PROVIDE THE DISTRICT/DESIGN CONSULTANT WITH SHOP DRAWINGS TO BE APPROVED PRIOR TO WORK BEING PERFORMED AS OUTLINED IN THE SPECIFICATIONS (SECTION 01.33.00, PART 1.6 SHOP DRAWINGS). ANY AND ALL WORK PERFORMED WITHOUT DISTRICT/DESIGN CONSULTANT APPROVAL SHALL BE AT THE SOLE RISK AND COST OF CONTRACTOR.
- 4. CONTRACTOR SHALL 5-YEARS DOCUMENTED EXPERIENCE AND FACTORY AUTHORIZATION LICENSE AND/OR CERTIFICATION TO FURNISH AND INSTALL SYSTEMS AS SHOWN ON DRAWINGS AND DOCUMENTS.
- 5. TEST AND VERIFY INTRUSION SYSTEM THROUGH MONITORING COMPANY, DEVICES REPORTING, PHONE/COMMUNICATION PRIMARY, SECONDARY LINES TIED IN.
- 6. CONTRACTOR SHALL USE DISTRICT CONSTRUCTION SERVER TO PROGRAM AND TEST INTRUSION AND ACCESS SYSTEMS.
- 7. CONTRACTOR SHALL INSTALL CONDUIT, PATHWAYS, BACK BOXES, CONDUCTORS AND CONTRACTOR FURNISHED DEVICES, CONNECT SUCH DEVICES TO THE SYSTEM HEAD ENDS OR SUB-PANEL LOCATIONS.
- 8. CONTRACTOR TO INSTALL DEDICATED ELECTRICAL CIRCUITS TO HEAD-END / SUB-PANEL LOCATIONS AND EXTEND ELECTRICAL CIRCUITS TO POWER SUPPLY LOCATIONS AND LOCK BOX LOCATIONS AS REQUIRED. PROTECTIVE MECHANICAL LOCKOUTS ON CIRCUITS SHALL BE PROVIDED AND INSTALLED BY CONTRACTOR.
- 9. WHERE DRAWINGS ARE DIAGRAMMATIC SHOWING ONLY THE GENERAL ARRANGEMENT OF THE SYSTEMS, THE CONTRACTOR SHALL HAVE THE RESPONSIBILITY FOR THE FITTING OF MATERIALS AND EQUIPMENT TO OTHER PARTS OF THE EQUIPMENT AND STRUCTURE AS REQUIRED.
- 10. CONTRACTOR SHALL FURNISH AND INSTALL ALL RELATED ACCESS CONTROL EQUIPMENT AND ELK EQUIPMENT AS SHOWN IN THE DETAIL SHEETS AND AS DEFINED IN THE SHOP DRAWINGS. CONTRACTOR TO INSTALL DISTRICT PROVIDED LOCK BOXES. CONTRACTOR IS RESPONSIBLE FOR PROVIDING NECESSARY LOCKBOX SHROUD AND TO PAINT MATCH THE LOCKBOX COLOR.
- 11. CONTRACTOR SHALL, PER THE APPROVED SHOP DRAWINGS, PROVIDE THE FULLY ASSEMBLED IMRON AND ELK HEAD-END / SUB-PANEL ASSEMBLIES, WHERE IDENTIFIED, IMRON AND ELK MODULES MAY NEED TO BE INSTALLED IN EXISTING ENCLOSURES. CONTRACTOR SHALL INSTALL, CONNECT, AND TEST INSTALLED HARDWARE USING A DISTRICT FURNISHED CONSTRUCTION DATABASE FILE. AFTER DISTRICT APPROVAL, THE DISTRICT SHALL INSTALL PRODUCTION DATABASE FOR FINAL OPERATION. CONTRACTOR SHALL, PER CONSTRUCTION DOCUMENTS, PROVIDE FULLY ASSEMBLED AND WIRED ELK HEAD-END / SUB-PANEL ASSEMBLIES FOR ELK CERTIFIED CONTRACTOR.





KMM SERVICES, INC.
TECHNOLOGY & ELECTRICAL ENGINEERS
5433 El Camino Ave. Suite 5
Carmichael, CA 95608
Office: (916) 359-4000 Fax: (916) 520-3831
www.kmm-services.com

LICENSE STAMPS

**PRELIMINARY DOCUMENTS
NOT FOR CONSTRUCTION**

These documents have not been completely reviewed by KMM Services, Inc. or by the building official. These documents are subject to revision. Future revisions must not be identified as such. Any data made or construction performed based on these documents is the responsibility of those making the bid or performing construction. These documents have been issued as engineering progress check set or for use of the building official.

Copyright © 2017

These drawings and specifications and the ideas, designs and arrangements represented thereby are and shall remain the property of KMM Services, Inc. and no part thereof shall be copied, disclosed or used in any way without the written consent of KMM Services, Inc. Any use made or construction performed based on these documents is the responsibility of those making the bid or performing construction. These documents have been issued as engineering progress check set or for use of the building official.

IF DRAWING IS NOT 30"x42" IT IS A REDUCED PRINT

SHEET REVISIONS

DELTA	DESCRIPTION	DATE
ADDENDUM 02		2019-02-22

SITE KEY PLAN

APPROVALS

**LOS RIOS COMMUNITY
COLLEGE DISTRICT**
**SACRAMENTO
CITY COLLEGE**

PROJECT
LOS RIOS CCD
IMRON ACCESS
CONTROL AND ELK
INTRUSION
SACRAMENTO
CITY COLLEGE
3835 FREEPORT BLVD.
SACRAMENTO, CA. 95822

SHEET TITLE

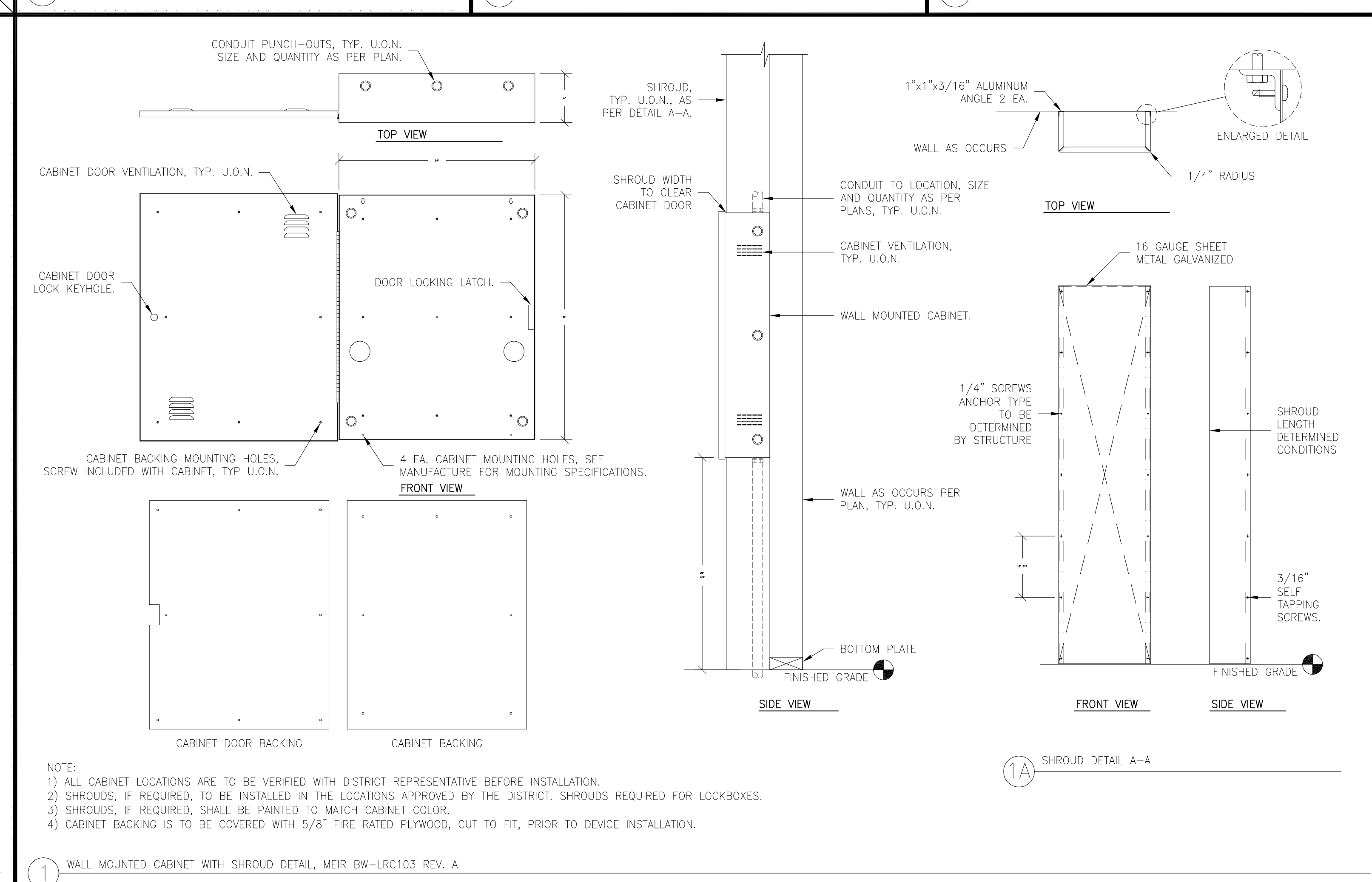
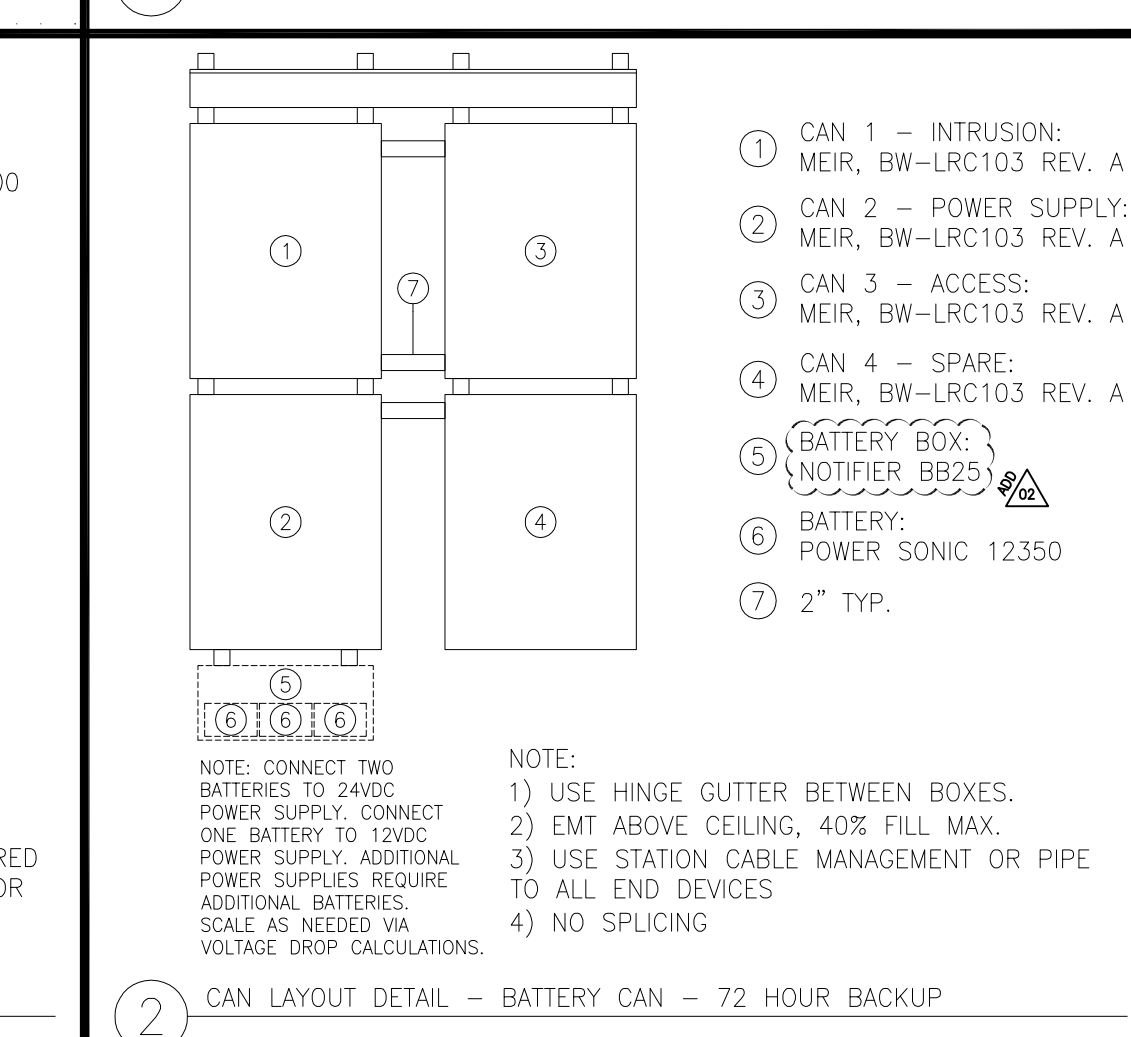
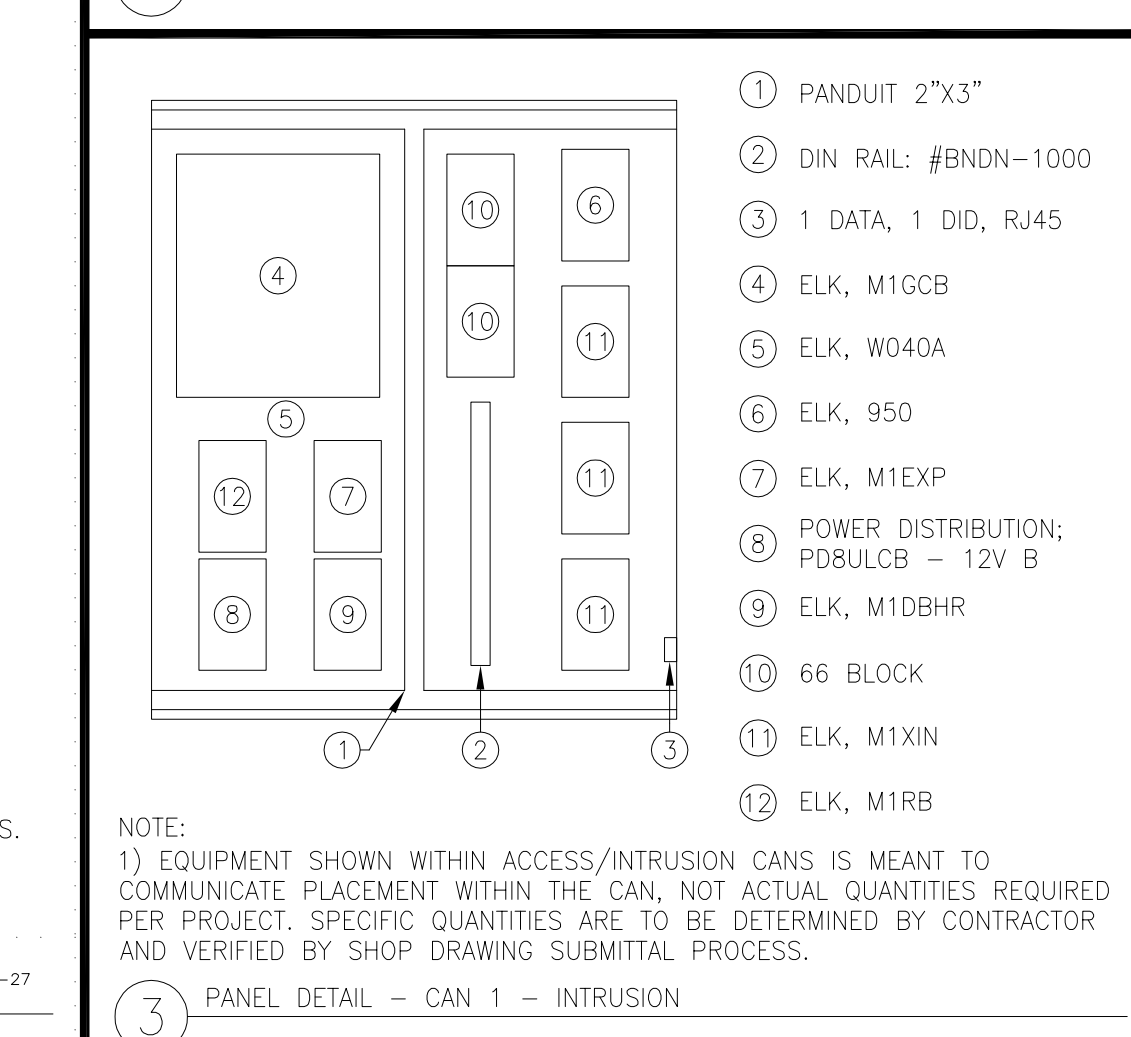
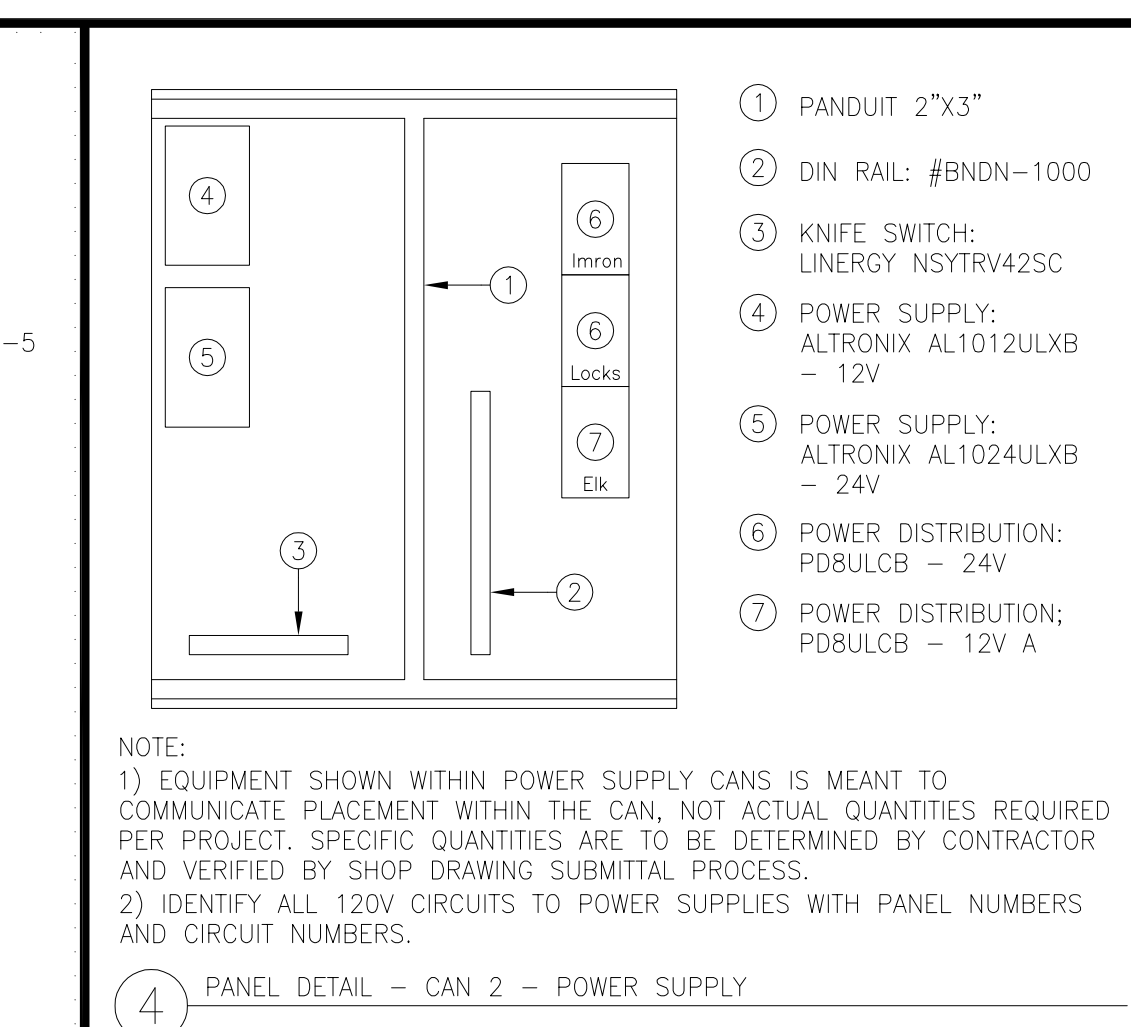
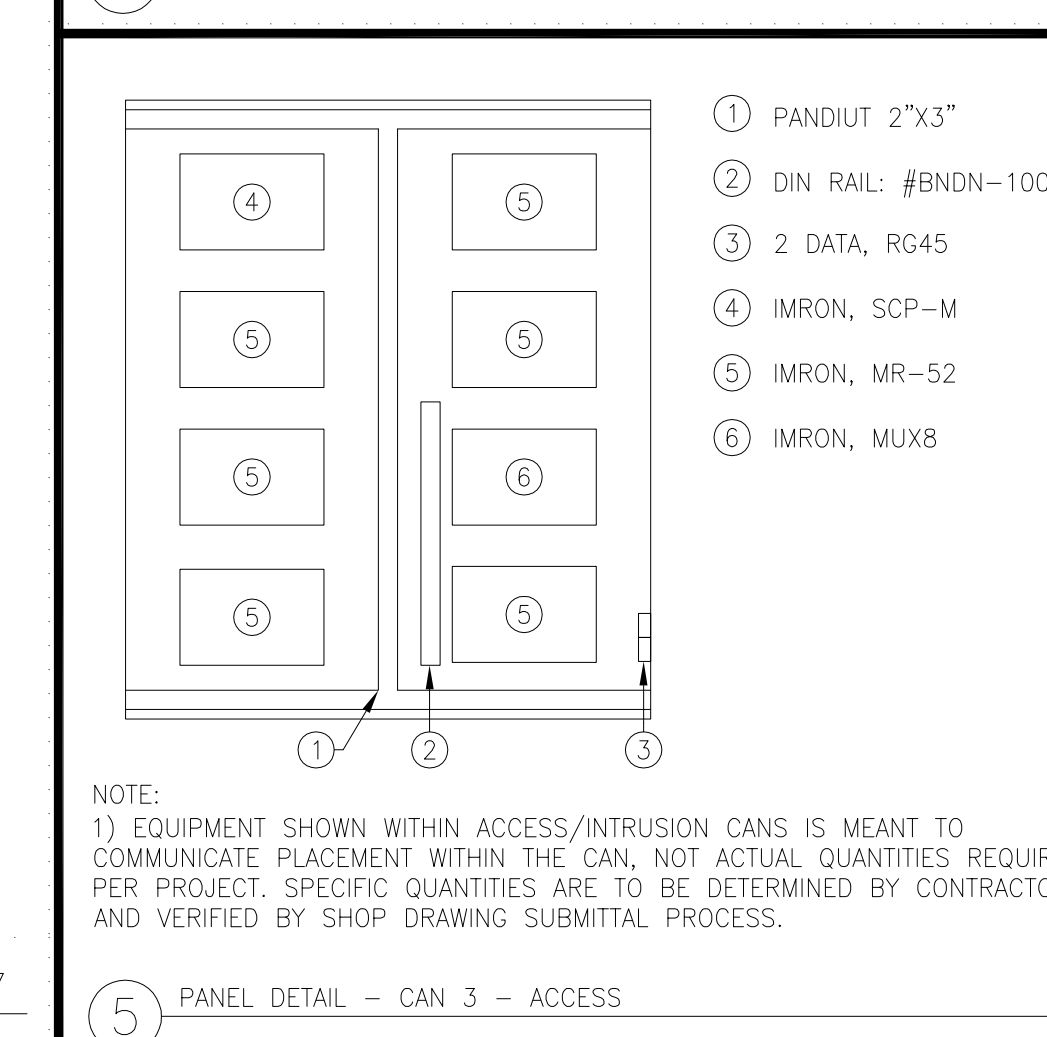
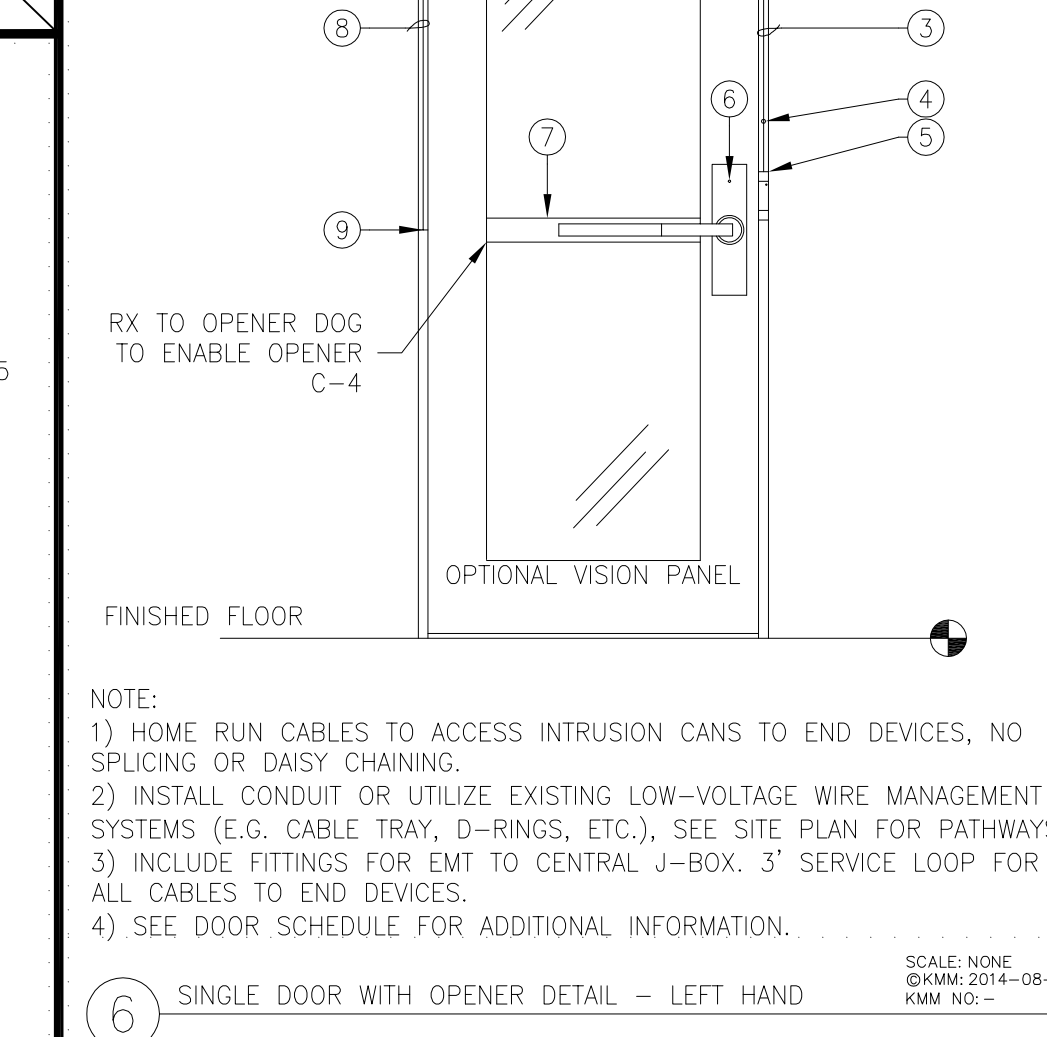
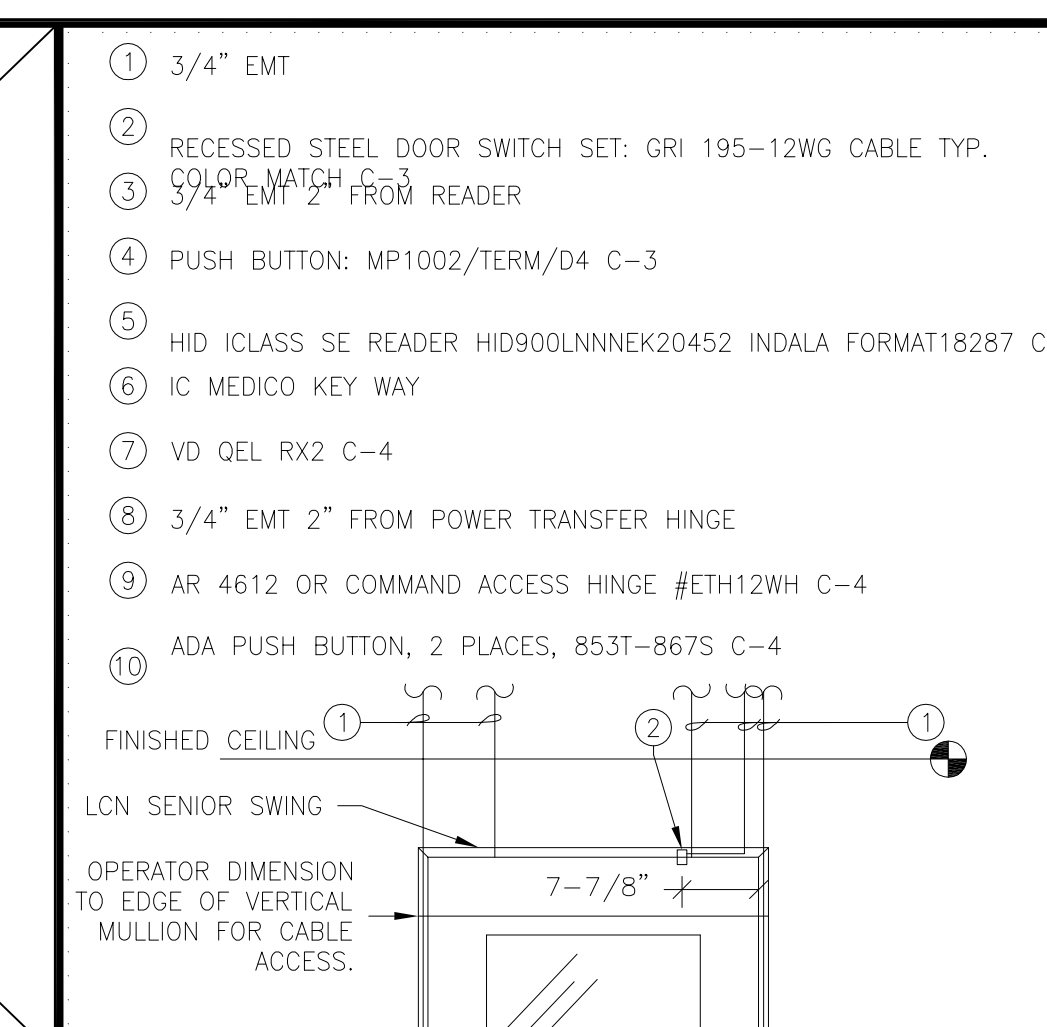
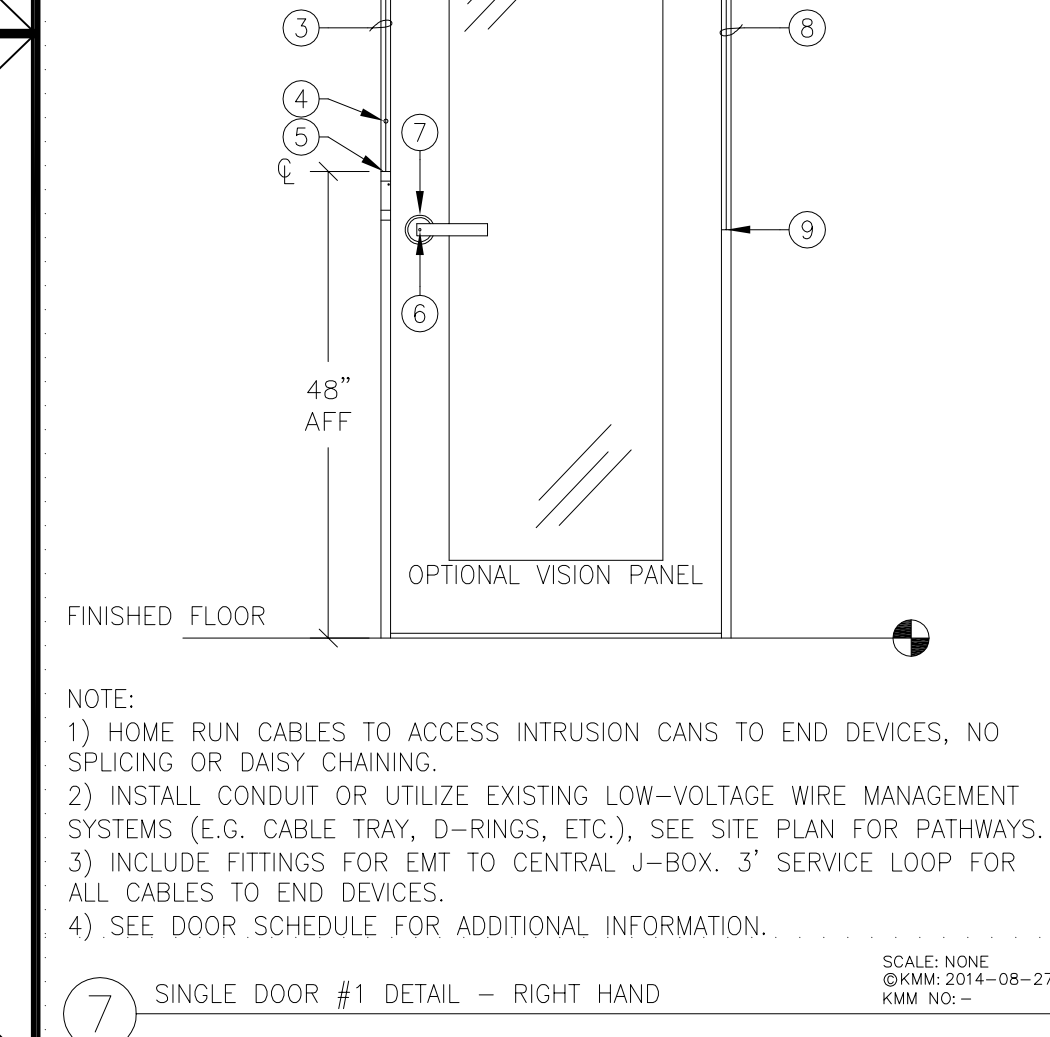
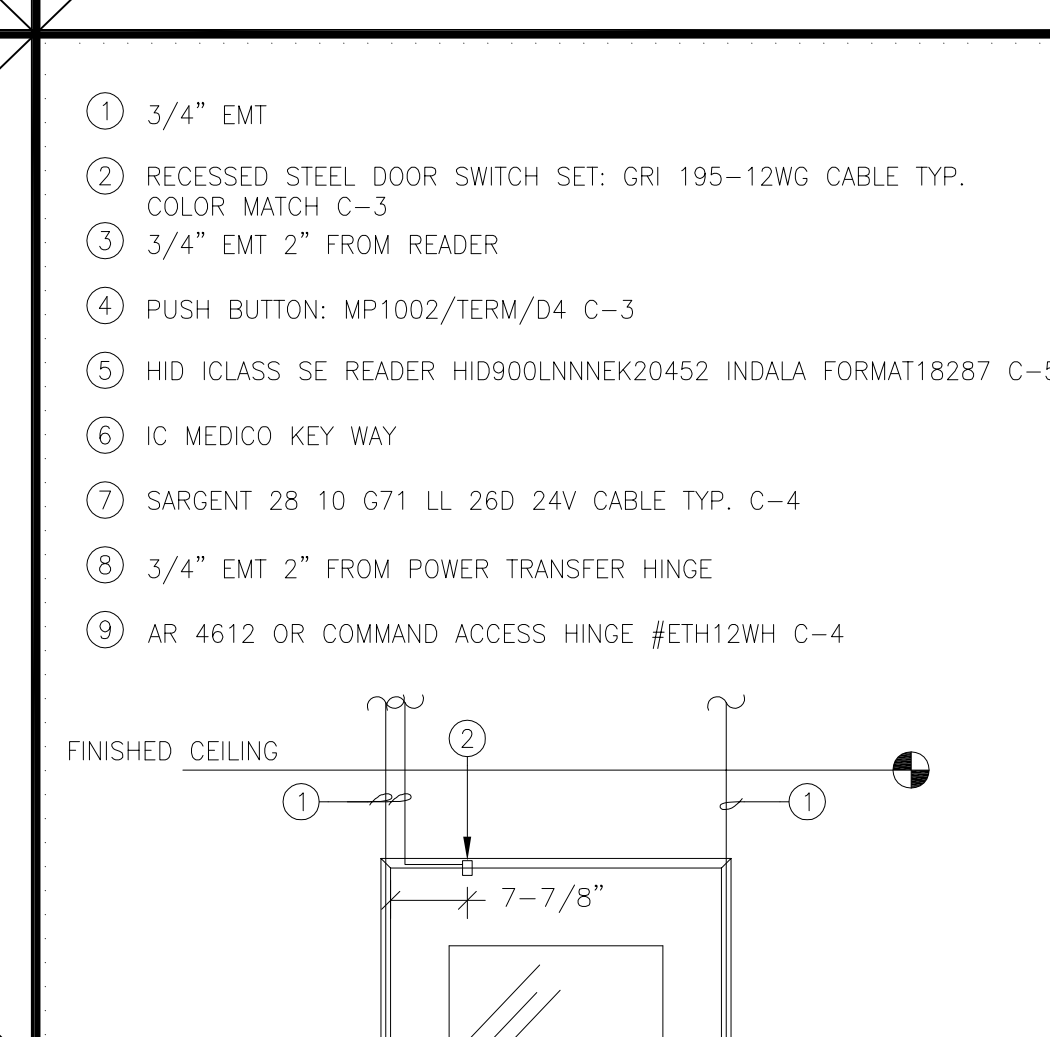
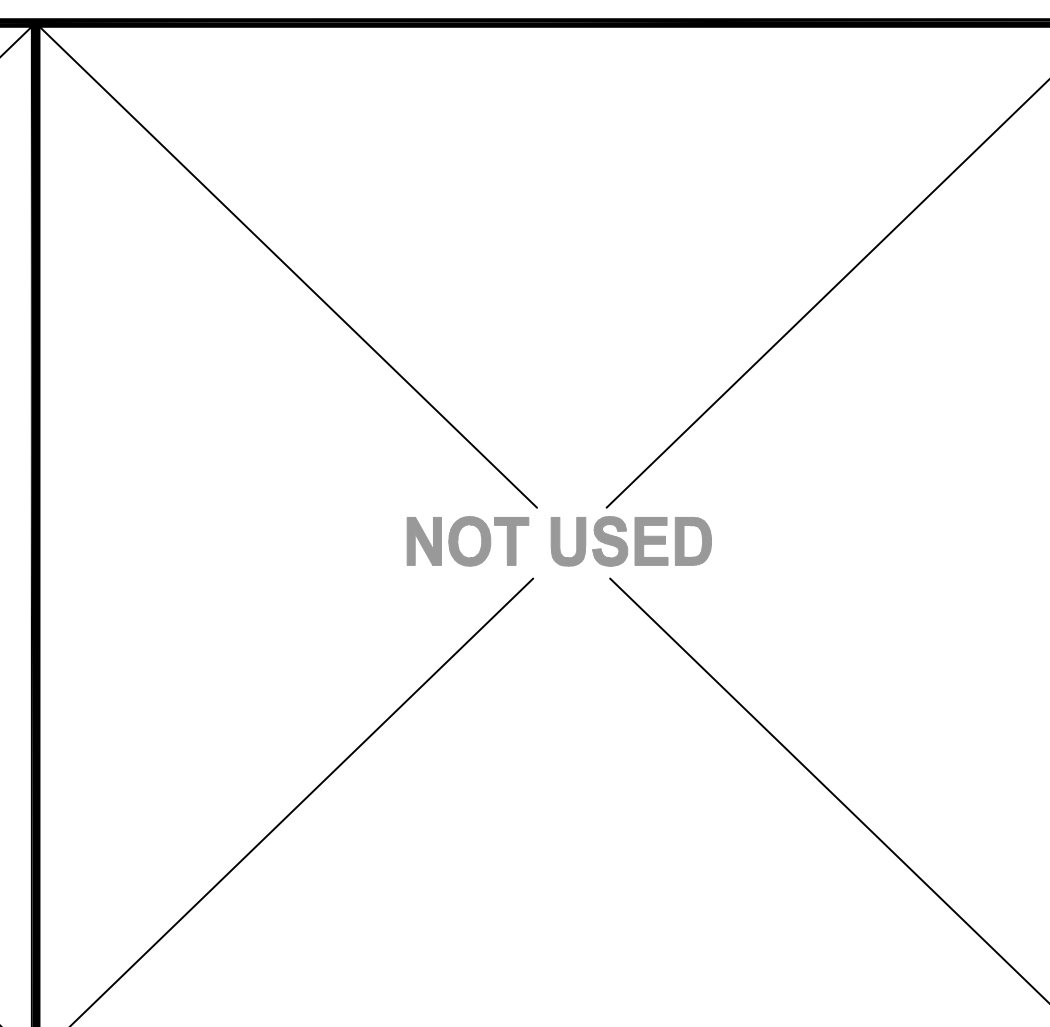
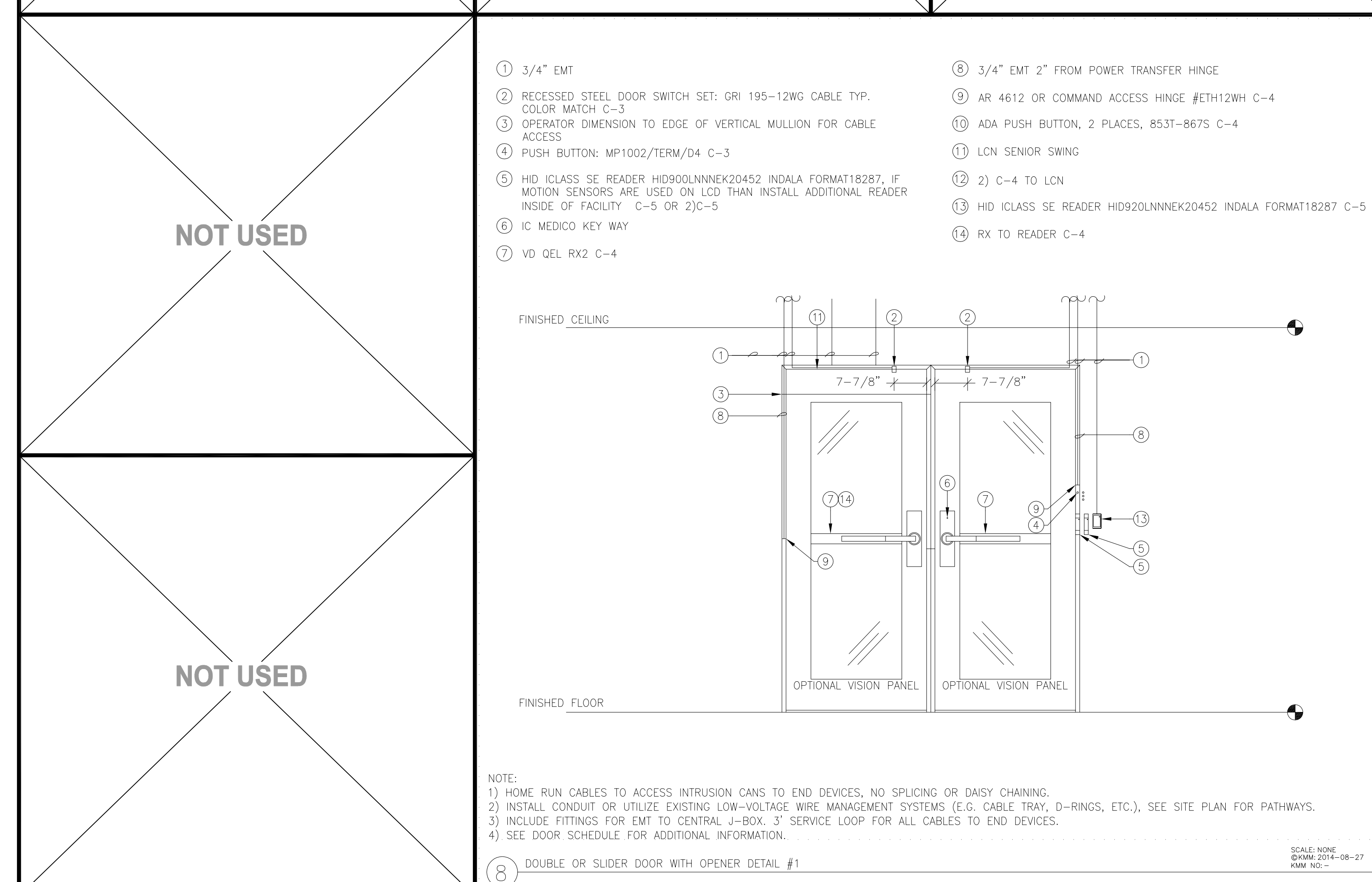
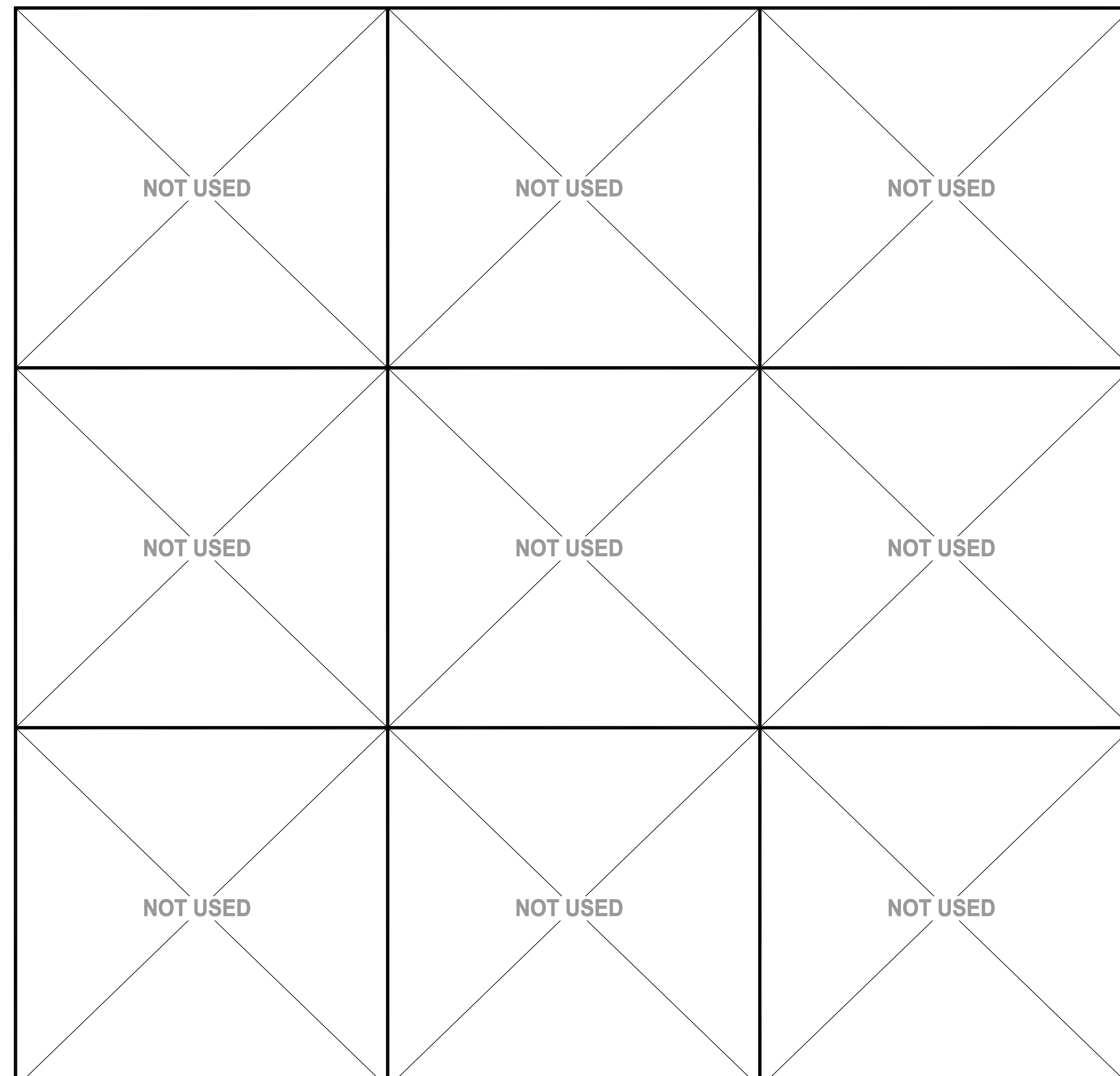
CABINET LAYOUT
DETAILS

DRAWING STATUS

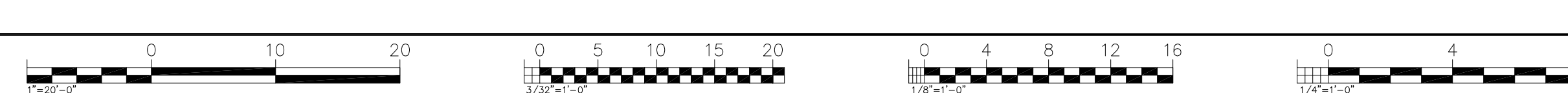
BID SET DOCUMENTS

PROJECT NO:	---
BID PACKAGE:	---
DESIGNED BY:	KMM
SCALE:	AS PER PLAN
ISSUE DATE:	2019-01-11
WORKING DATE:	2019-02-21
SHEET	

S-O-A002



Login Name: goodwin
 Print Date: February 21, 2019 - 3:29 pm
 User: goodwin
 Project: S-O-A002 Access Control
 Sheet: S-O-A002 Access Control
 Title: Cabinet Layout Details
 Path: \\server\projects\2019\20190221\20190221_S-O-A002_Access Control\Cabinet Layout Details.dwg
 User: goodwin





KMM SERVICES, INC.
 TECHNOLOGY & ELECTRICAL ENGINEERS
 5433 El Camino Ave. Suite 5
 Carmichael, CA 95608
 Office: (916) 359-4000 Fax: (916) 520-3831
 www.kmm-services.com

LICENSE STAMPS

**PRELIMINARY DOCUMENTS
 NOT FOR CONSTRUCTION**

These documents have not been completely reviewed by KMM Services, Inc. or by the building official. These documents are subject to revision. Future revisions made may not be identified as such. Any data made in construction performed based on these documents is the responsibility of those making the bid or performing construction. These documents have been issued as engineering progress check set or for use of the building official.

Copyright © 2017

These drawings and specifications and the ideas, designs and arrangements represented thereby are and shall remain the property of KMM Services, Inc. and no part thereof shall be copied, disclosed or used in connection with any other work or project other than the specific project for which they have been prepared and developed without the written consent of KMM Services, Inc. Visual contact with these drawings or specifications shall constitute conclusive evidence of these restrictions.

IF DRAWING IS NOT 30"x42" IT IS A REDUCED PRINT

SHEET REVISIONS

DELTA	DESCRIPTION	DATE
ADD	ADDENDUM 02	2019-02-22

SITE KEY PLAN

APPROVALS

**LOS RIOS COMMUNITY
 COLLEGE DISTRICT**

**SACRAMENTO
 CITY COLLEGE**

PROJECT
LOS RIOS CCD
IMRON ACCESS
CONTROL AND ELK
INTRUSION
SACRAMENTO
CITY COLLEGE
 3835 FREEPORT BLVD.
 SACRAMENTO, CA. 95822

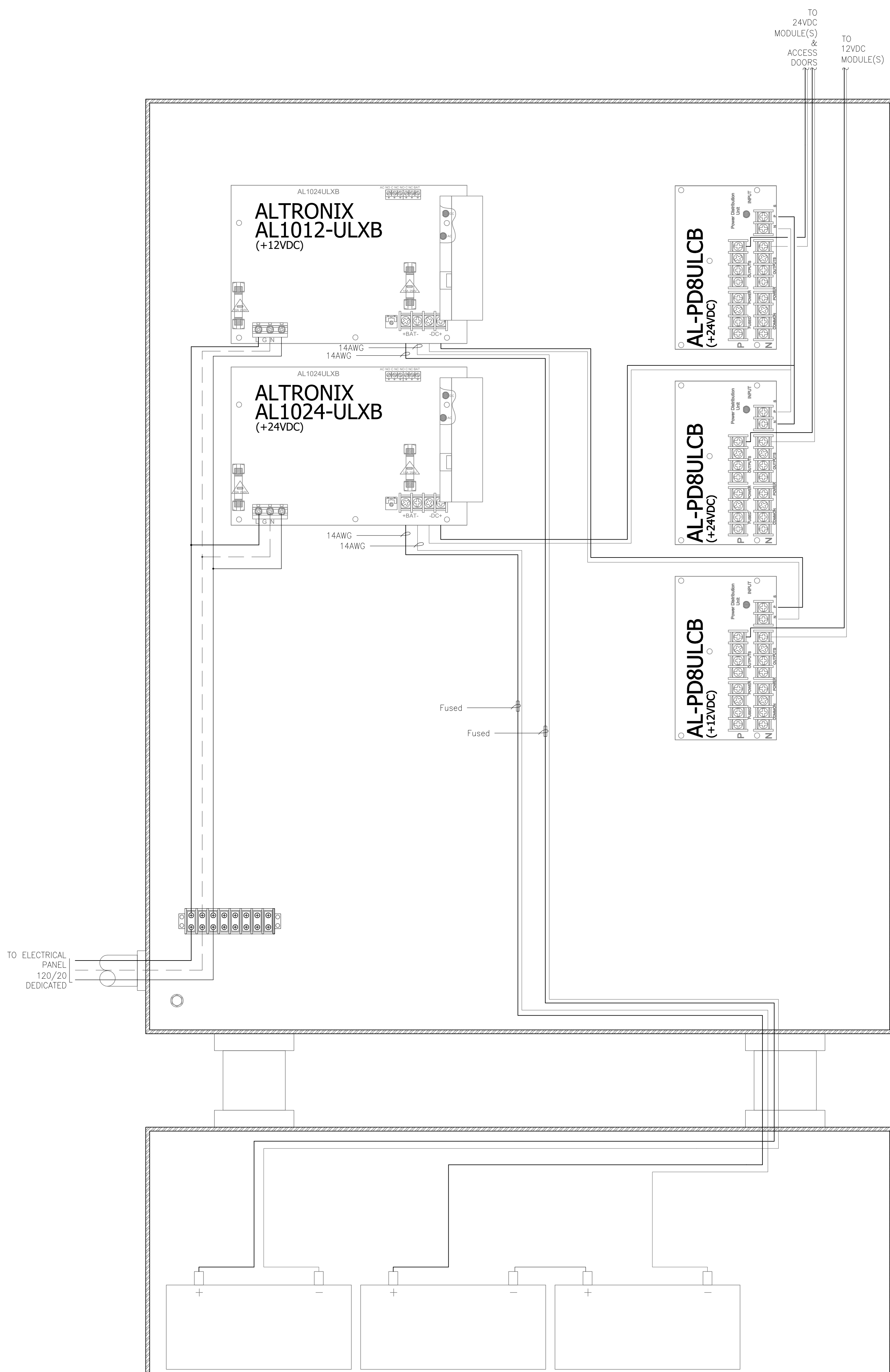
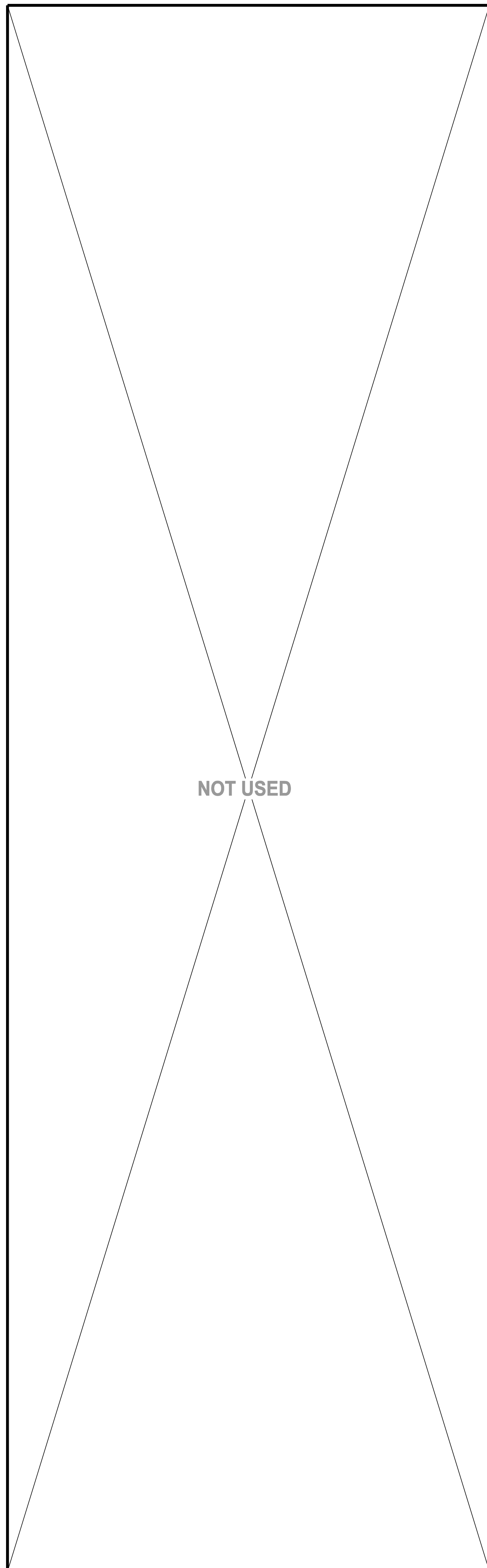
SHEET TITLE
CABINET TERMINATION
DETAILS AND TYPICAL
WIRING

DRAWING STATUS

BID SET DOCUMENTS

PROJECT NO:	-
BID PACKAGE:	-
DESIGNED BY:	KMM
SCALE:	AS PER PLAN
ISSUE DATE:	2019-01-11
WORKING DATE:	2019-02-21
SHEET	

S-0-A005

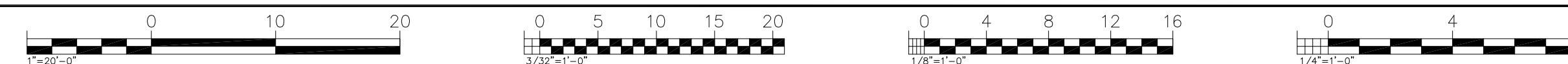


1 POWER SUPPLY TERMINATIONS
 SCALE: NONE

CABLE SCHEDULE					
TAG ID	DESCRIPTION	MFR.	PART NO.	MFR.	PART NO.
C-1	2-PAIR 24AWG CAT5e W/ 20#18AWG, STRANDED	STRUCTURED CABLE PRODUCTS	ACC-2		
C-2	4-PAIR 24AWG CAT5e		4978		
C-3	4-PAIR 24AWG CAT5e (PLENUM)		5088		AQC225
C-4	4-PAIR 22AWG, STRANDED		1104		
C-5	20#16, STRANDED (PLENUM)	HONEYWELL	3121	WEST PENN	
C-6	8C#22AWG STRANDED (PLENUM)		1207		AQ224, AQ240SS
C-7	8C#22AWG STRANDED (PLENUM)		3206		
C-8	24/4PR CAT5e UTP BUREAU CABLE, BLACK		5090		
C-9	14AWG 4 STRAND CONDUCTORS DIRECT BURIAL		4154		

NOTE:
 PLENUM RATED CABLES TO BE USED IN ALL PLENUM ENVIRONMENTS. TYP. U.N.O.

1. WHEN ALL FIELD DEVICES/DOORS ARE CONFIRMED OPERATIONAL AND PROPERLY PROGRAMMED, CONTRACTOR SHALL CALL FOR FINAL TESTING AND COMMISSIONING OF THE SYSTEM. CONTRACTOR SHALL GIVE OWNER NOTICE OF SUCH FINAL TESTING A MINIMUM OF (4) FOUR WORKING DAYS PRIOR TO ACTUAL FINAL TEST DATE FOR OWNER TO COORDINATE ATTENDANCE OF PROPER STAFF, CONSULTANTS AND/OR COMMISSIONING AGENT.
2. N/A
3. CONTRACTOR SHALL FURNISH AND INSTALL ALL CIRCUIT BOARDS, ACTIVE/PASSIVE COMPONENTS, WIRING, PANDUIT AS SHOWN ON SCHEMATIC.





CABLE SCHEDULE					
TAG ID	DESCRIPTION	MFR.	PART NO.	MFR.	PART NO.
C-1	2-PAIR 24AWG CAT5e W/ 2C#16AWG, STRANDED	STRUCTURED CABLE PRODUCTS	ACC-2		
C-2	4-PAIR 24AWG CAT5e		4978		
	4-PAIR 24AWG CAT5e (PLENUM)		5088		
C-3	4-PAIR 22AWG, STRANDED		1104	AGC225	
	4-PAIR 22AWG, STRANDED (PLENUM)		3104		
C-4	2C#16, STRANDED	HONEYWELL	1125	WEST PENN	AGC429
	2C#16, STRANDED (PLENUM)		3121		
C-5	8C#22AWG STRANDED		1207		AG224, AGC240SS
	8C#22AWG STRANDED (PLENUM)		3206		
C-6	24/4PR CAT5e UTP BURIAL CABLE, BLACK		5090		
C-7	14AWG 4 STRAND CONDUCTORS DIRECT BURIAL		4154		

GENERAL NOTE(S):

1. ALL (N) CABLES TO BE PLENUM RATED.

SHEET NOTE(S):

1. DOORS 1, 2 & 3 TO BE TIED TO AND ELECTRONICALLY DOGGED WITH DOOR 4.

2. CARD READER IS TO BE AN HID GLOBAL CORPORATION, P/N 940NNITEK2037P.

1 LEARNING RESOURCE CENTER - HEAD-END LOCATION - ROOM 132



KMM SERVICES, INC.
 TECHNOLOGY & ELECTRICAL ENGINEERS
 5433 El Camino Ave. Suite 5
 Carmichael, CA 95608
 Office: (916) 359-4000 Fax: (916) 520-3831
 www.kmm-services.com

LICENSE STAMPS

PRELIMINARY DOCUMENTS NOT FOR CONSTRUCTION

These documents have not been completely reviewed by KMM Services, Inc. or by the building official. These documents are subject to revision. Failure to review these documents may result in construction performed based on these documents is the responsibility of those making the bid or performing construction. These documents have been issued as an engineering progress check set or for use of the building official.

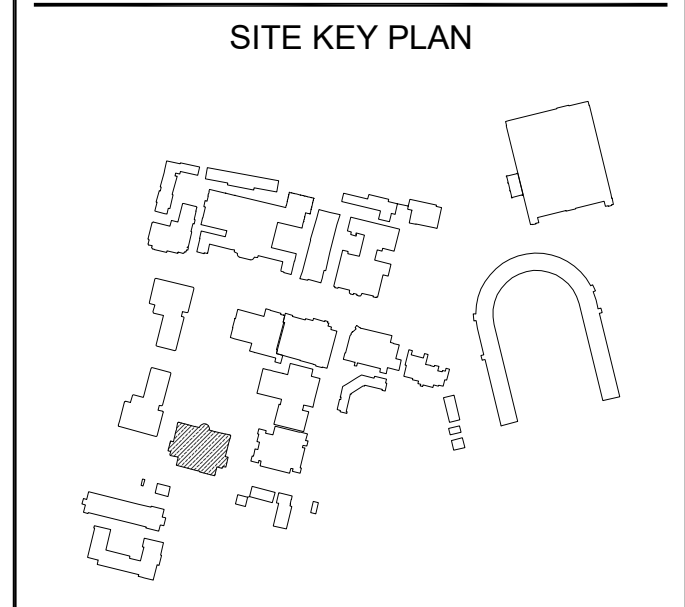
Copyright © 2017

These drawings and specifications and the ideas, designs and arrangements represented thereby are and shall remain the property of KMM Services, Inc. and no part thereof shall be copied, disclosed to others, or used in connection with any other work or project other than the specific project for which they have been prepared and delivered without the written consent of KMM Services, Inc. Visual contact with these drawings or specifications shall constitute conclusive evidence of these restrictions.

IF DRAWING IS NOT 30"x42" IT IS A REDUCED PRINT

SHEET REVISIONS

DELTA	DESCRIPTION	DATE
ADD	ADDENDUM 02	2019-02-22



APPROVALS

LOS RIOS COMMUNITY COLLEGE DISTRICT

SACRAMENTO CITY COLLEGE

PROJECT

LOS RIOS CCD

IMRON ACCESS CONTROL AND ELK INTRUSION

SACRAMENTO CITY COLLEGE

3835 FREEPORT BLVD.
 SACRAMENTO, CA. 95822

SHEET TITLE

LEARNING RESOURCE CENTER FIRST FLOOR PLAN

DRAWING STATUS

BID SET DOCUMENTS

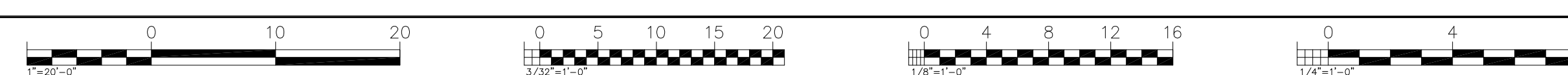
PROJECT NO:	-
BID PACKAGE:	-
DESIGNED BY:	KMM
SCALE:	AS PER PLAN
ISSUE DATE:	2019-01-11
WORKING DATE:	2019-02-21

S-5-A210



LEARNING RESOURCE CENTER FIRST FLOOR PLAN

SCALE: 3/32"=1'



Logix Name: goodk
 Plot Date: February 21, 2019 - 3:14 pm
 User: S:\Projects\2019\20190221\SRV\KMM\A210\Access\5-A210-1-01.dwg
 XREFS: X: S:\Projects\2019\20190221\SRV\KMM\A210\A210.dwg

CABLE SCHEDULE					
TAG ID	DESCRIPTION	MFR.	PART NO.	MFR.	PART NO.
C-1	2-PAIR 24AWG CAT5e W/ 2C#16AWG, STRANDED	STRUCTURED CABLE PRODUCTS	ACC-2		
C-2	4-PAIR 24AWG CAT5e		4978		
	4-PAIR 24AWG CAT5e (PLENUM)		5088		
C-3	4-PAIR 22AWG, STRANDED		1104		AQC225
	4-PAIR 22AWG, STRANDED (PLENUM)		3104		
C-4	2C#16, STRANDED	HONEYWELL	1125	WEST PENN	AQC429
	2C#16, STRANDED (PLENUM)		3121		
C-5	8C#22AWG STRANDED		1207		AQ224, AQ240SS
	8C#22AWG STRANDED (PLENUM)		3206		
C-6	24/4PR CAT5e UTP BURIAL CABLE, BLACK		5090		
C-7	14AWG 4 STRAND CONDUCTORS DIRECT BURIAL		4154		

GENERAL NOTE(S):

1. ALL (N) CABLES TO BE PLENUM RATED.

SHEET NOTE(S):

1. CARD READER IS TO BE AN HID GLOBAL CORPORATION, P/N 940NNTEK2037P.



KMM SERVICES, INC.
 TECHNOLOGY & ELECTRICAL ENGINEERS
 5433 El Camino Ave. Suite 5
 Carmichael, CA 95608
 Office: (916) 359-4000 Fax: (916) 520-3831
 www.kmm-services.com

LICENSE STAMPS

**PRELIMINARY DOCUMENTS
 NOT FOR CONSTRUCTION**

These documents have not been completely reviewed by KMM Services, Inc. or by the building official. These documents are subject to revision. Failure to review these documents may be construed as an acceptance of the drawings and specifications. The user of these documents is the responsibility of those making the bid or performing construction. These documents have been issued as an engineering progress check set or for use of the building official.

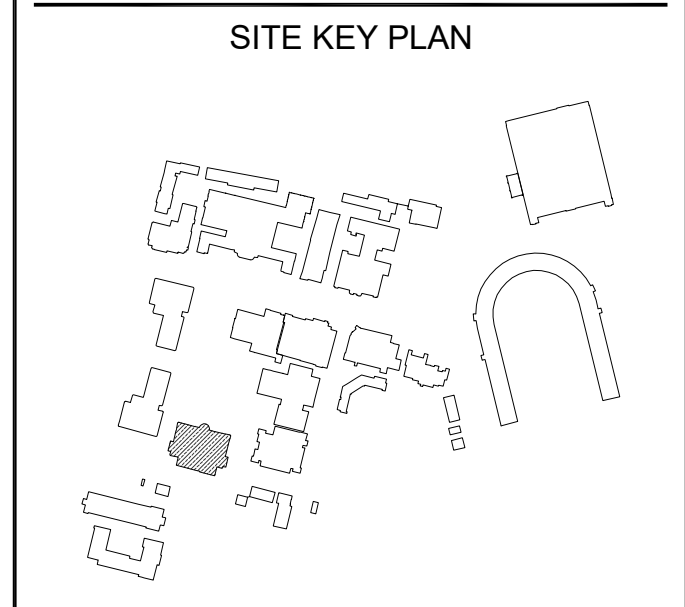
Copyright © 2017

These drawings and specifications and the ideas, designs and arrangements represented thereby are and shall remain the property of KMM Services, Inc. and no part thereof shall be copied, disclosed to others, or used in connection with any other work or project other than the specific project for which they have been prepared and developed without the written consent of KMM Services, Inc. Visual contact with these drawings or specifications shall constitute conclusive evidence of these restrictions.

IF DRAWING IS NOT 30"x42" IT IS A REDUCED PRINT

SHEET REVISIONS

DELTA	DESCRIPTION	DATE
ADD	ADDENDUM 02	2019-02-22



APPROVALS

LOS RIOS COMMUNITY COLLEGE DISTRICT

SACRAMENTO CITY COLLEGE

PROJECT

**LOS RIOS CCD
 IMRON ACCESS CONTROL AND ELK INTRUSION
 SACRAMENTO CITY COLLEGE**

3835 FREEPORT BLVD.
 SACRAMENTO, CA. 95822

SHEET TITLE

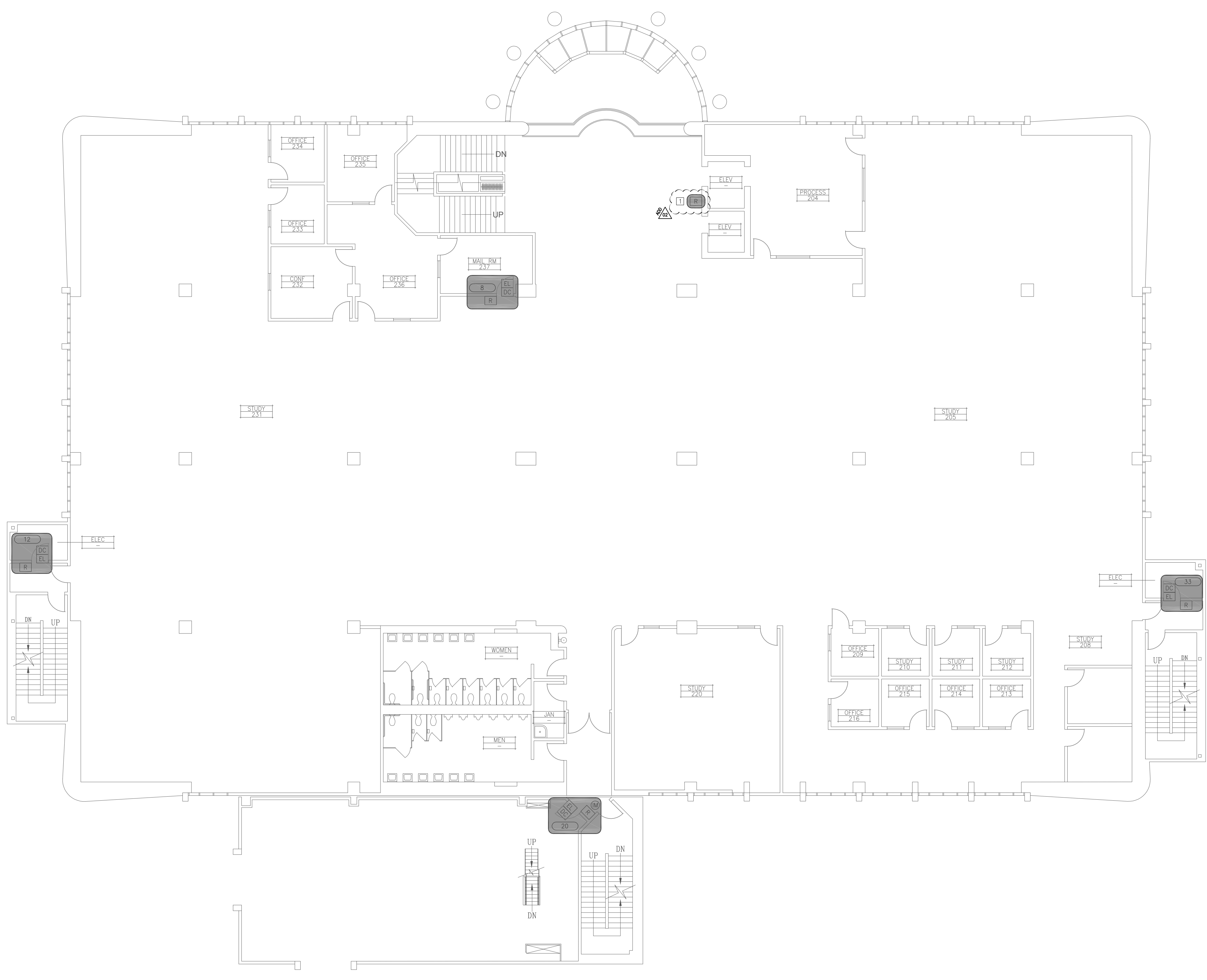
LEARNING RESOURCE CENTER SECOND FLOOR PLAN

DRAWING STATUS

BID SET DOCUMENTS

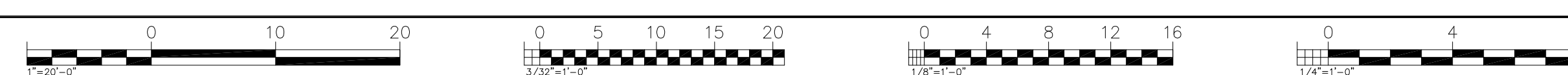
PROJECT NO:	-
BID PACKAGE:	-
DESIGNED BY:	KMM
SCALE:	AS PER PLAN
ISSUE DATE:	2019-01-11
WORKING DATE:	2019-02-21
SHEET	

S-5-A220



LEARNING RESOURCE CENTER SECOND FLOOR PLAN

SCALE: 3/32"=1'



LogIn Name: goodch
 Plot Date: February 21, 2019 - 3:14 pm
 Plot Date: February 21, 2019 - 3:14 pm
 User: S:\2019\19-0222\K. A. M. M. Arch. ET - Access: K. A. Cable Schuchman

TAG ID	DESCRIPTION	MFR.	PART NO.	MFR.	PART NO.	
C-1	2-PAIR 24AWG CAT5e W/ 2C#16AWG, STRANDED	STRUCTURED CABLE PRODUCTS	ACC-2			
C-2	4-PAIR 24AWG CAT5e	HONEYWELL	4978	WEST PENN	AQ225	
	4-PAIR 24AWG CAT5e (PLENUM)		5088			
C-3	4-PAIR 22AWG, STRANDED		1104			
	4-PAIR 22AWG, STRANDED (PLENUM)		1125			
C-4	2C#16, STRANDED		3104			AQ249
	2C#16, STRANDED (PLENUM)		3121			
C-5	8C#22AWG STRANDED		1207			AQ224, AQ240SS
	8C#22AWG STRANDED (PLENUM)	3206				
C-6	24/4PR CAT5e UTP BURIAL CABLE, BLACK		5090			
C-7	14AWG 4 STRAND CONDUCTORS DIRECT BURIAL		4154			

GENERAL NOTE(S):

1. ALL (N) CABLES TO BE PLENUM RATED.

SHEET NOTE(S):

1. CARD READER IS TO BE AN HID GLOBAL CORPORATION, P/N 940NNNTEK2037P.



KMM SERVICES, INC.
 TECHNOLOGY & ELECTRICAL ENGINEERS
 5433 El Camino Ave. Suite 5
 Carmichael, CA 95608
 Office: (916) 359-4000 Fax: (916) 520-3831
 www.kmm-services.com

LICENSE STAMPS

**PRELIMINARY DOCUMENTS
 NOT FOR CONSTRUCTION**

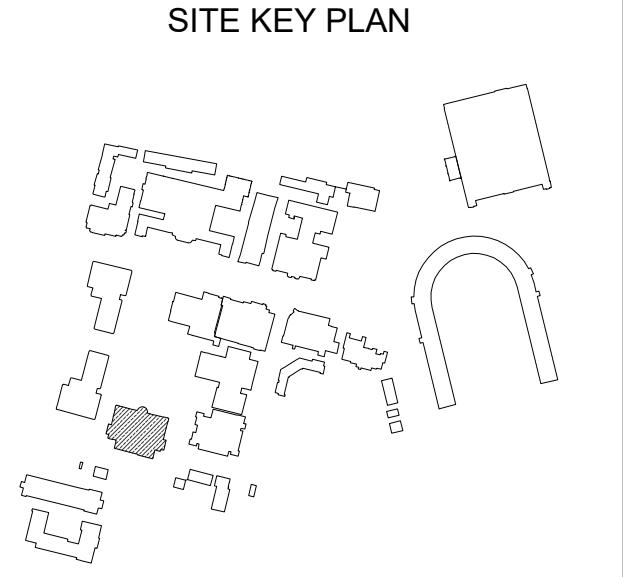
These documents have not been completely reviewed by KMM Services, Inc. or by the building official. These documents are subject to revision. Future revisions made may not be clearly indicated in such. Any data made on construction performed based on these documents is the responsibility of those making the bid or performing construction. These documents have been used as an engineering progress check set or for use of the building official.

Copyright © 2017

These drawings and specifications and the ideas, designs and arrangements represented thereby are and shall remain the property of KMM Services, Inc. and no part thereof shall be copied, disclosed to others, or used in connection with any other work or project other than the specific project for which they have been prepared and developed without the written consent of KMM Services, Inc. Visual contact with these drawings or specifications shall constitute conclusive evidence of these restrictions.

IF DRAWING IS NOT 30"x42" IT IS A REDUCED PRINT

DELTA	DESCRIPTION	DATE
ADD	ADDENDUM 02	2019-02-22



APPROVALS

LOS RIOS COMMUNITY COLLEGE DISTRICT
 SACRAMENTO CITY COLLEGE

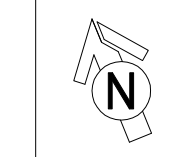
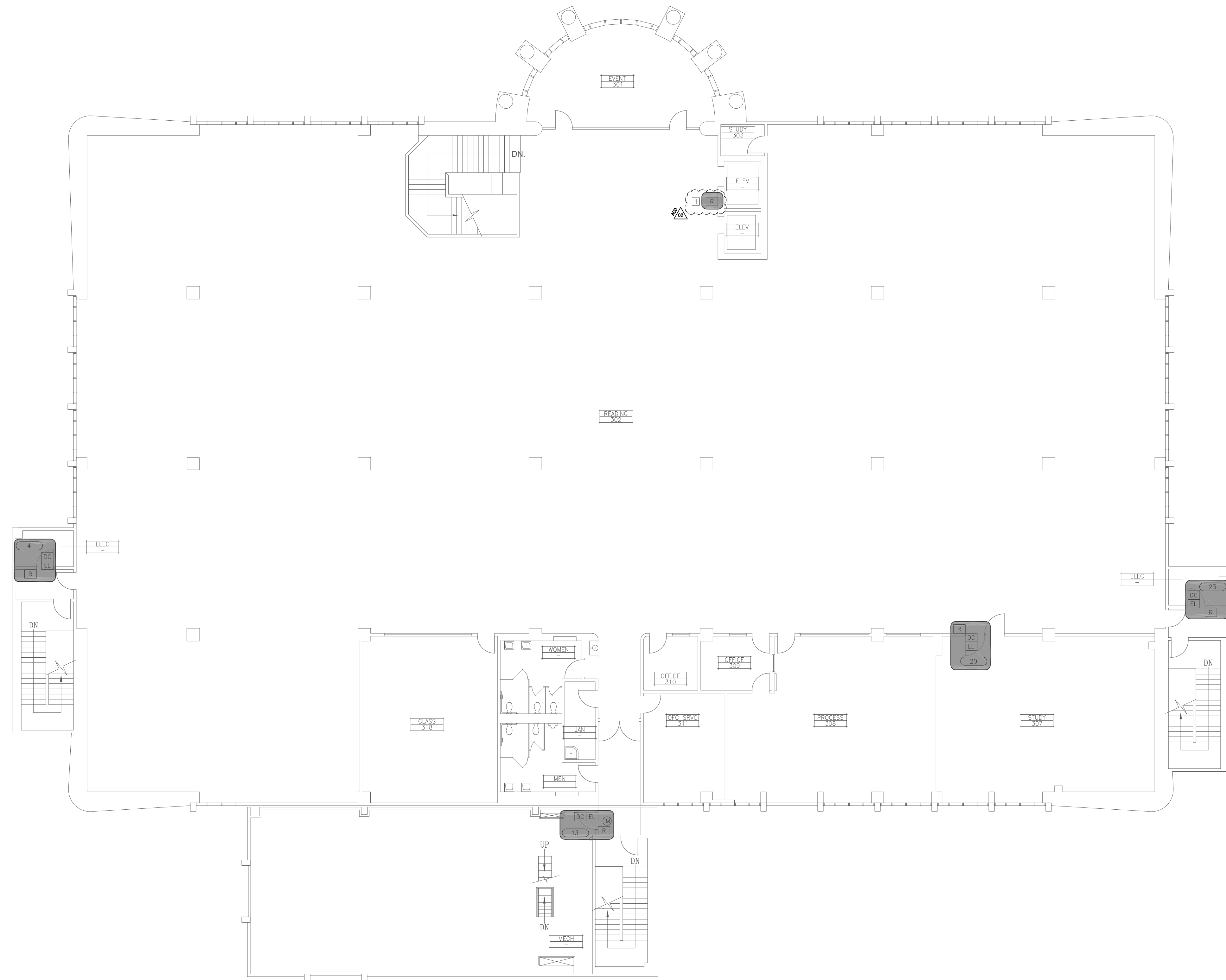
PROJECT
 LOS RIOS CCD
 IMRON ACCESS CONTROL AND ELK INTRUSION
 SACRAMENTO CITY COLLEGE
 3835 FREEPORT BLVD.
 SACRAMENTO, CA. 95822

SHEET TITLE
 LEARNING RESOURCE CENTER THIRD FLOOR PLAN

DRAWING STATUS
 BID SET DOCUMENTS

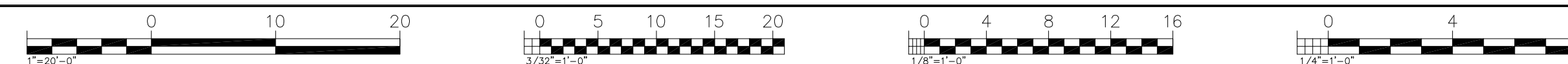
PROJECT NO:	—
BID PACKAGE:	—
DESIGNED BY:	KMM
SCALE:	AS PER PLAN
ISSUE DATE:	2019-01-11
WORKING DATE:	2019-02-21
SHEET	

S-5-A230



LEARNING RESOURCE CENTER THIRD FLOOR PLAN

SCALE: 3/32"=1'



LogIn Name: gbooth
 Plot Date: February 21, 2019 3:14 pm
 Plot Path: S:\2019\105033\K\MM\Arch\5-2019-105033.dwg
 User: KMM\gbooth